



S8 PLUS

GNSS SYSTEM FOR
PROFESSIONAL SURVEYORS



USER MANUAL

Version:	1
Revision:	1
Data:	27-03-2014
Revised by:	AM

Contents

Chapter I : A brief introduction of S8 PLUS.....	4
Chapter II: S8 PLUS mainframe.....	6
<i>II.1 The outlook of mainframe</i>	<i>6</i>
<i>II.2 Interfaces</i>	<i>7</i>
<i>II.3 The battery housing.....</i>	<i>8</i>
<i>II.4 Indicator leds and instrument setup</i>	<i>9</i>
Chapter III: S8 PLUS standard accessories.....	17
<i>III.1 The case of S8 PLUS.....</i>	<i>17</i>
<i>III.2 Power supply.....</i>	<i>18</i>
<i>III.3 The antennas</i>	<i>20</i>
<i>III.4 Cables</i>	<i>21</i>
<i>III.5 Other accessories.....</i>	<i>22</i>
<i>III.6 Controllers.....</i>	<i>24</i>
Chapter IV: S8 PLUS Configuration.....	26
<i>IV.1 The installation of base and rover</i>	<i>26</i>
<i>IV.2 The configuration by using keys.....</i>	<i>27</i>
<i>IV.3 Standard operation of leds.....</i>	<i>29</i>
<i>IV.4 How to measure the antenna height.....</i>	<i>30</i>
Chapter V: STONEX® Assistant for S8 PLUS.....	32
<i>V.1 Start Stonex Assistant on your PC.....</i>	<i>33</i>
<i>V.2 Settings.....</i>	<i>35</i>
<i>V.2.1. Static Data Survey.....</i>	<i>36</i>
<i>V.2.2. Dynamic:.....</i>	<i>37</i>
<i>V.2.2.1. Base coordinates setting.....</i>	<i>38</i>
<i>Startup By Single Position</i>	<i>40</i>
<i>Startup By a Specific Position:.....</i>	<i>41</i>
<i>V.2.3. Data Link.....</i>	<i>42</i>
<i>V.2.3.1 Network</i>	<i>42</i>
<i>V.2.3.2 UHF Radio</i>	<i>47</i>
<i>V.2.3.3 External.....</i>	<i>49</i>
<i>V.2.3.4. Bluetooth</i>	<i>49</i>
<i>V.2.3.5. No Datalink – only for Rover</i>	<i>51</i>
<i>V.2.3.6. Network and External - only for Base.....</i>	<i>51</i>
<i>V.2.4 NMEA Output string</i>	<i>52</i>

<i>V.3 Import Data</i>	53
<i>V.4 Serial Port Forwarding</i>	55
<i>V.5 Register</i>	58
<i>V.6 Firmware update</i>	60
Appendix 1: Default Radio Settings	63
Appendix 2: Technical Specifications	64
Appendix 3: Safety Recommendations	65
<i>Pacific Crest XDL Micro UHF 410-470 MHz Data transceiver</i>	65
<i>GPRS/GSM modem ZTE WCDMA</i>	65
http://ec.europa.eu/enterprise/sectors/electrical	66
Appendix 4: Copyrights, warranty and environmental recycling	67
<i>Copyrights and trademarks</i>	67
<i>Release Notice</i>	67
<i>Standard Limited Warranty</i>	67
<i>Shipping policy</i>	68
<i>Return policy Dead On Arrival instruments</i>	68
<i>Firmware/Software warranty</i>	69
<i>Over Warranty repair(s) policy</i>	69
<i>Disclaimer and Limitation of Remedy</i>	69
<i>Instruments</i>	70
<i>Accessories</i>	70
<i>Restriction for GPS Boards</i>	71
<i>Service Procedure</i>	71
Environmental recycling	72
<i>FOR COUNTRIES IN THE EUROPEAN UNION (EU)</i>	72
<i>FOR COUNTRIES OUTSIDE EUROPEAN UNION (EU)</i>	73

Chapter I: A brief introduction of S8 PLUS

STONEX® devoted itself to offer to surveyors the most advanced GPS tools. GPS RTK surveying technology plays an important role in surveying tasks and its use is getting more and more widespread. As a leading GPS RTK instrument producer, STONEX® guarantees that the S8 PLUS, our new RTK GPS receiver, is suited for nowadays demands of precision, reliability and user friendliness.

S8 PLUS is a multi-constellation GNSS receiver, able to receive three GPS signal frequencies, GLONASS and Compass/Beidou, ready for GALILEO constellation.

S8 PLUS mainframe integrates a GNSS antenna, GNSS module, UHF transmitting and receiving radio, radio antenna, GSM/GPRS modem, Bluetooth device and battery. So S8 PLUS is totally integrated: it means that the surveyor only needs the handheld to start its job.

The exquisite outlook and the amazing color bring you a fashioned surveying station. This device has a higher stability, lesser power consumption, smaller volume and lighter weight than the previous STONEX® receivers. S8 PLUS has a special design which makes it waterproof, dustproof and vibration-proof. The batteries and built-in radio are set in the bottom of mainframe, giving more effective dustproof and waterproof qualities and makes the S8 PLUS a better performer in field of surveying. The Wireless receiver unit (weighs) 1.2 kg: the rover is light and easy to carry. The low power consumption of receiver allows users to carry out and work in long time with only one single battery.

Integrated design and anti-jamming property are combined perfectly: the former avoids the problem of a cumbersome external antenna, and the mainframe design can resolve the jamming problem effectively.

The S8 PLUS receiver mounts a GPS/GLONASS/BD antenna with a four feed technology. This design is able to reduce the electrical phase center error ellipsoid and in addition it improves the Right Hand Circular Polarization Characteristics (RHCP) of the antenna, resulting in enhanced GPS signal tracking and improved multipath rejection, in case a polarization reversal has taken place as a result of the signal reflection.

S8 PLUS has a new 3G GPRS/GSM module which allow faster and more reliable connections. . This allows STONEX® S8 PLUS receiver to be a flexible system for demanding surveying applications. As a rover, it can be used as a static double frequency receiver or in a RTK

configuration, where differential corrections are received from CORS via GSM/GPRS data modem (maximum range 70 km) or by another S8 PLUS receiver acting as base, linked by GSM/GPRS data modem or UHF radio modem.

In the last case S8 PLUS in base configuration can transmit with the built-in 0.5/2 W radio or can be connected to a more powerful external radio at user's disposal in order to reach the requested metric range.

The receiver can be connected to different RTK software for different applications. The data transfer is easy and fast, like a Plug and Play USB drive.

STONEX® provides two year of warranty to S8 PLUS receivers.

It should be noted that high power signals from a nearby radio or radar transmitter can overwhelm the receiver circuits. Low power transmitter like those used in cell-phones do not normally interfere with receiver's operations. It's important to draw your attention to the operational temperatures, limits which should not be exceeded for a correct functioning (see pag. 63).

It is also important to point out that in each weather case after coming back from the field you should keep the container open in a warm and dry place and at the same time take out the controller and receiver from the container, in order to make them dry.

Anyway we recommend you to manage the instrument with reasonable care.

Even if you have used other GPS or GNSS products before, we recommend that you spend some time reading this manual to learn about the special features of this product.

If you are not familiar with GNSS technology, we suggest you read a specific book in order to better understand the contents of this manual. Any way you can ask for any technical support by sending an email to our address support@stonex.it or contact your local dealer.

ATTENTION:

This manual is valid for both S8 PLUS and S8 N PLUS. Their constructions, functions and operations are the same, just the second model is build without internal UHF radio, so you have just to ignore every information referred to the radio.

Chapter II: S8 PLUS mainframe

II.1 The outlook of mainframe

The mainframe has an almost cylindrical shape, with a base larger than the height. There are three parts: an upper cap, a rubber loop and the main structure. The upper cap protects the GNSS antenna placed inside. The rubber loop has the function of softening possible shocks or falls. In the front of the main structure there are 2 keys and 9 lights, on the bottom side there is one slot for the built-in radio and GSM/GPRS module, and one for the battery and SIM card. All the others components of the receiver (Bluetooth device, main board, OEM board, etc.) are contained inside the main structure.



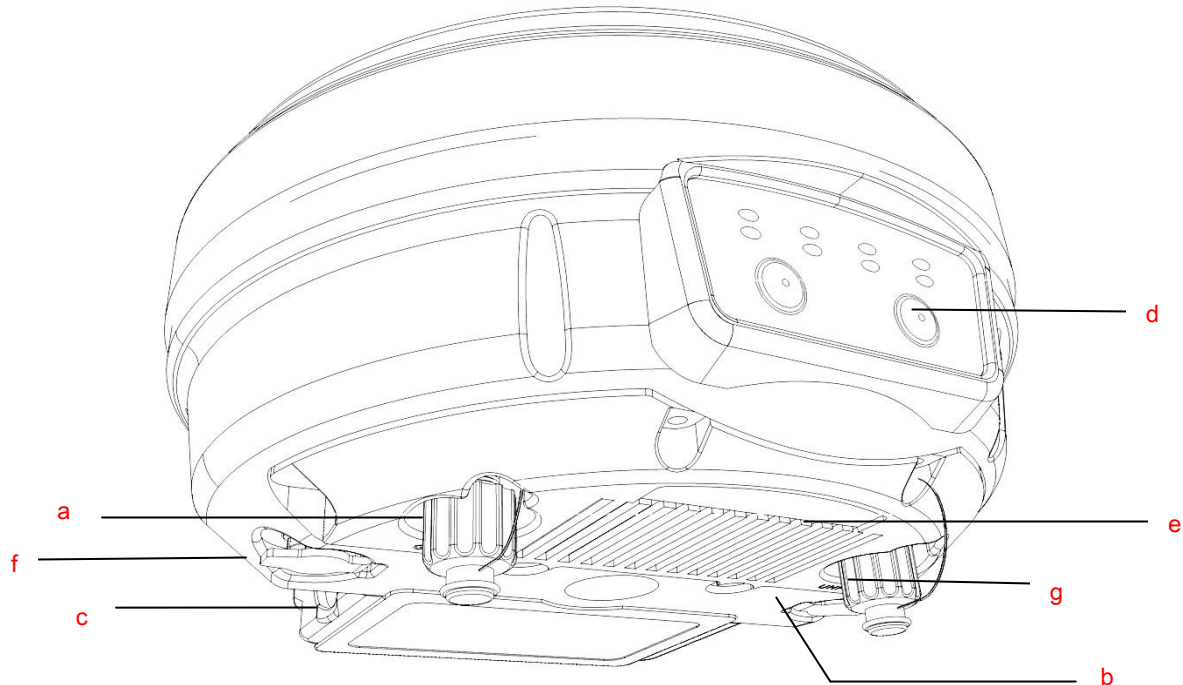
Fig. 2.1 - S8 PLUS mainframe



Fig. 2.2 - S8 PLUS label

II.2 Interfaces

The mainframe interfaces are shown in Fig. 2.3: the left port (five pins *LEMO*) is used for external power supply and external radio connection, the right port (seven pins *LEMO*) is used for data transferring between receiver and computer or between receiver and the handheld. Near the radio and GSM/GPRS module there are radio and GSM/GPRS antenna interfaces.



- a) TNC connector for GPRS/GSM antenna
- b) 5pins Lemo port for external datalink connection
- c) Battery housing
- d) Front panel
- e) Built-in radio and GSM/GPRS module
- f) 7pins Lemo port for data transport.
- g) TNC connector for UHF radio antenna

Fig. 2.3 - S8 PLUS components and ports

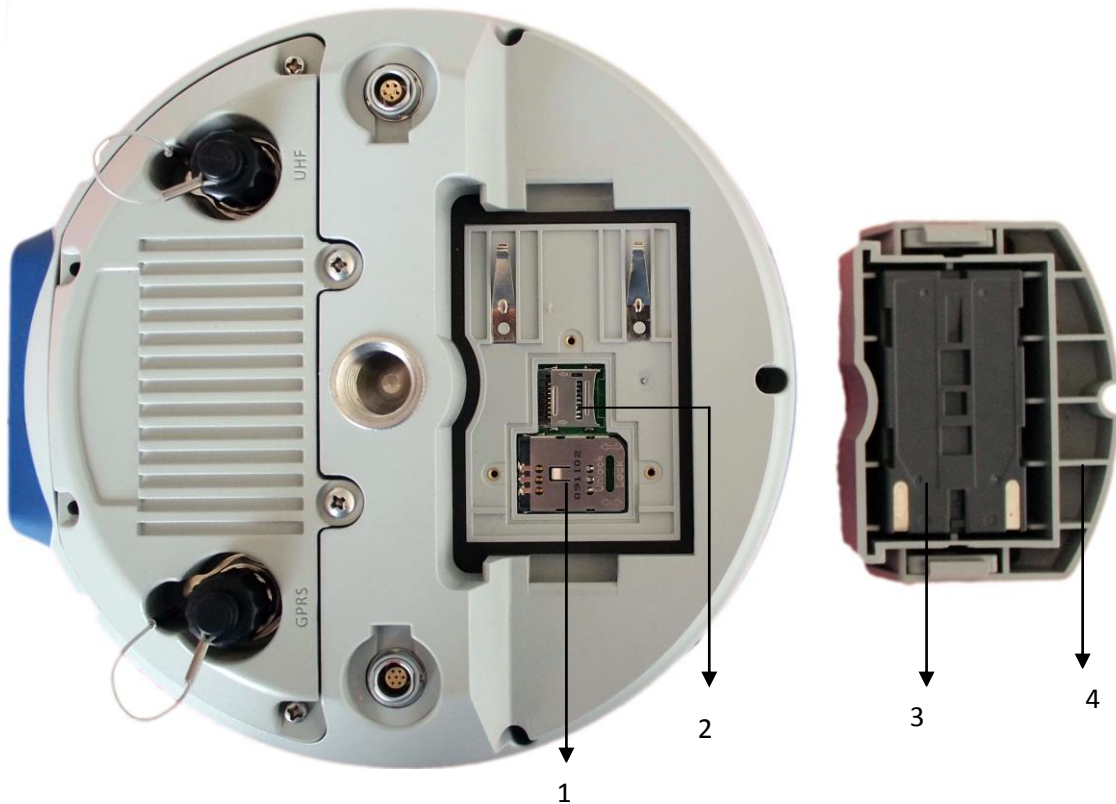


Fig. 2.4 - 5-pins LEMO port



Fig. 2.5 - 7-pins port

II.3 The battery housing



1. SIM card slot
2. MicroSD card slot
3. Battery
4. Battery cover

Fig. 2.6 - S8 PLUS battery housing

Under the place for the battery, there is the slot for SIM card and SD memory card.

II.4 Indicator leds and instrument setup

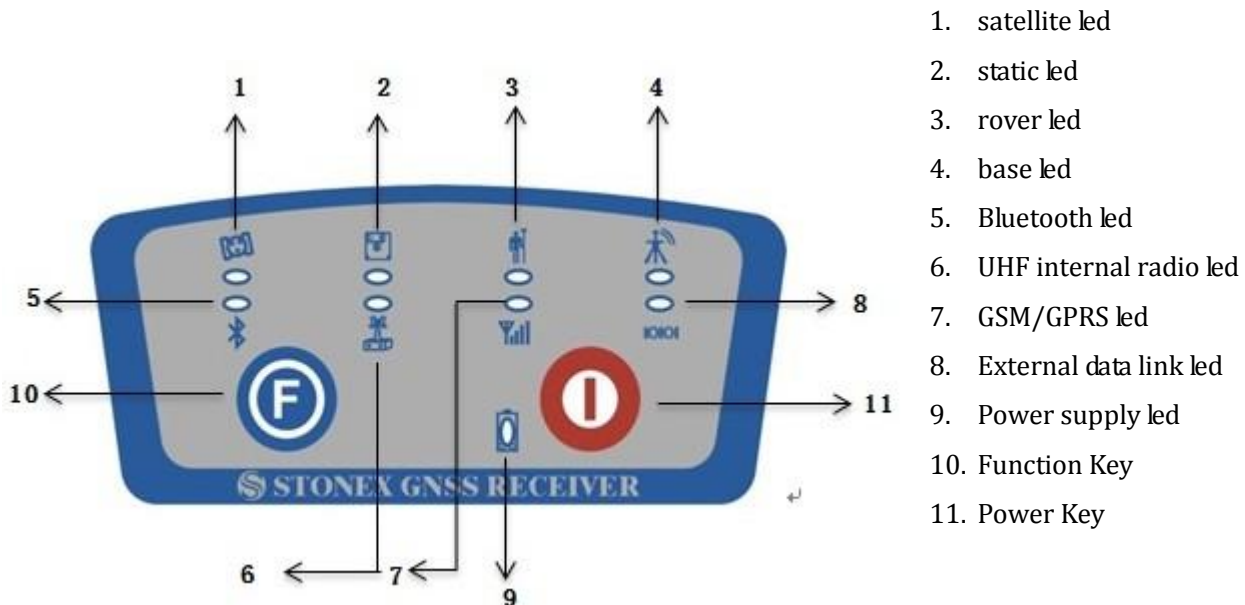


Fig. 2.7 - S8 PLUS keys and indicator leds

The functionality as follows, from left to right:

SATELLITE led (green):

It shows the amount of locked satellites; when the receiver links one or more satellites signal it will start to blink every 30 seconds for a number of times equal to the number of locked satellites.



Fig. 2.8 - S8 PLUS satellite led

STATIC led (*red*):

It switches on if the static mode is selected and it starts to blink when the receiver is recording data, with the same frequency of the sample rate.



Fig. 2.9 - S8 PLUS static led

ROVER led (*red*):

Rover led is on when the receiver is working in rover mode.



Fig. 2.10 - S8 PLUS rover led

BASE led (*red*):

Base led is on when the receiver is working in base mode.



Fig. 2.11 - S8 PLUS base led

BLUETOOTH led (*blue*):

Once you have connected the receiver with the handheld, this led will on.

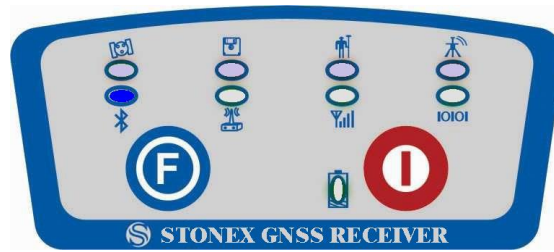


Fig 2.12 - S8 PLUS Bluetooth led

UHF INTERNAL RADIO led (*green*):

This led is ON when UHF internal radio is selected as RTK datalink.

It is blinking when it is transmitting data in base mode or receiving data in rover mode.



Fig 2.13 - S8 PLUS internal radio led

GSM/GPRS led (*green*):

This light is on when GSM/GPRS module is selected as RTK datalink. It starts to blink when there is data transfer ongoing (download in rover mode and upload in base mode).



Fig 2.14 - S8 PLUS internal radio led

EXTERNAL DATALINK led (*green*):

This light is on when external datalink (external radio, external Bluetooth device, etc.) is selected

as RTK datalink. It starts to blink when there is data transfer ongoing (download in rover mode and upload in base mode).

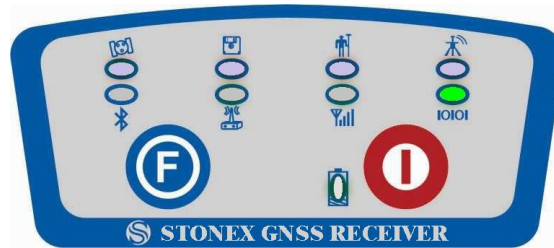


Fig 2.15 - S8 PLUS external radio led

INTERNAL POWER led (green and red):

It includes two kind of status:

1. Green: power supply in good condition.
2. Red: low power (below 20%).
3. Red blinking and beeping: very low power (below 10%)

Usually when the light is red you have still one hour of power reserve. External power and internal battery share same power light. When external power is used, the led indicates external power level. When the power is below 10%, the red led will flash and you also hear three beep every 60s.



Fig. 2.16 - S8 PLUS power led

F Key: Function key

It can switch the working mode (static, base or rover) and RTK datalink (built-in radio, external datalink or GPRS/GSM).

Switch working mode: Power on the receiver while pressing F key in the meantime, wait until all lights flash, then release both buttons. Now every time you press F key, you will see one red led

switched on and moving through the three working mode from left to the right.

Switch datalink: Press F key in ROVER or BASE mode, you will see one green led switched on, that moves every time you press F key through the three datalink from left to right.

I Key: Power key

It turns on/off the receiver and has also a confirm function.

Power on receiver: Press and hold I key for at least one second, the receiver will power on.

Power off receiver: Press and hold I key for few seconds, after three beeps all lights turn off, at that point release the key, the receiver is off .

Self-Check: it is a procedure predisposed for verifying the correct working of the instrument devices, the operation way is:

- Press and hold I key for more than 10 seconds, as for turning it off, but keeping pressed the key after all lights have turned off.
- Release the key when you hear another beep: receiver is starting to make a self-check.

Self-check lasts typically around 1 minute. During this procedure some leds will turn on in a sequence, the meaning of lights is:

- Internal radio led: ON if UHF module pass the test; *FLASH* if UFH module fails the test.
- GSM/GPRS led: ON if GSM/GPRS module pass the test; *FLASH* if GSM/GPRS module fails the test.
- satellite led: ON if GNSS OEM module pass the test; *FLASH* if GNSS OEM module fails the test

If you have noticed at least one problem during self-check, please contact your local dealer or email to support@stonex.it

After the self-check procedure the receiver will turn on and begin to work normally.

Note: The frequency setting of the internal UHF module is set back to factory default after a self-test.

How can you select the working mode?

- Insert the battery, then press and hold I key + F key: the receiver will start.
- Keep pressed I key + F key until the all lights blink at the same time (Fig. 2.14), then release the keys.



Fig. 2.17 - S8 PLUS, all led blinking at the same time

Now every time you press F key, the STATIC/ROVER/BASE lights will turn on in the corresponding order. You can select three different red lights, each of them refers to one working mode. Press I key when the chosen light is blinking and the receiver will restart into the selected working mode. Summary of working modes:

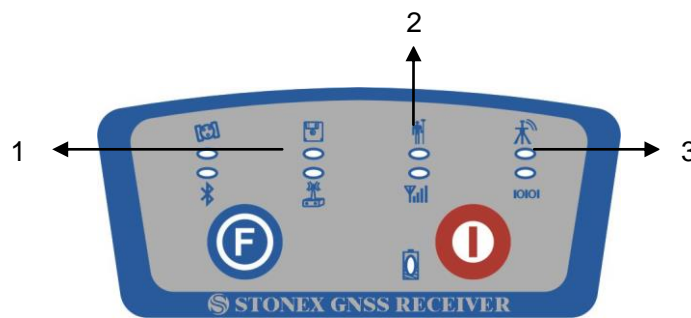


Fig. 2.18 - S8 PLUS summary of working mode led

1. Static mode
2. Rover mode
3. Base mode

Some definitions of working mode:

Static: is the stand-alone station that collect raw observations and need a post-processing in office for getting accurate results.

Base: is the fixed GPS station used to provide differential corrections to the mobile GPS

receiver.

Rover: is the mobile receiver used to survey on field.

How can you select data link?

After you have entered working mode, press F key, the UHF/GPRS/EXT lights will blink by turns. Then you can select different green lights, each one refers to different data link. This situation refers only to the rover and base mode, since in static mode there is no green light blinking.

Summary of data link types:

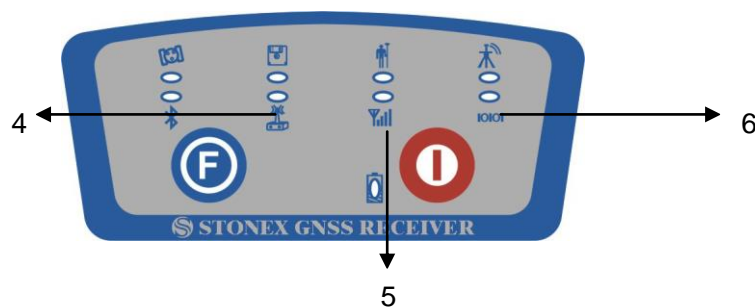


Fig. 2.19 - S8 PLUS summary of data-link led

4. Internal UHF Radio
5. GPRS\GSM module
6. External radio

Some definitions of available datalink:

Network: is an internet connection by GPRS band to a base that provide differential corrections or a connection between base and rover by a GSM direct call (like a phone call).

UHF: is a connection between base and rover by the internal radio communication.

External: is a connection between base and rover by an external device attached through the 5-pin LEMO port, it is usually an external radio.

Bluetooth: is an option for sending or receiving the NTRIP corrections to the receiver through the Bluetooth channel.

Note: To select or to change working mode or datalink is also possible both by Stonex Assistant (see

chapter V) or by field software.

Chapter III: S8 PLUS standard accessories

On the basis of the configuration chosen (base or rover) some of these accessories are included in the receiver bundle.

III.1 The case of S8 PLUS

There are two kinds of S8 PLUS cases: Rover case and Base case. The inner layout of the Base case and Rover case is different.

Base case has the room for external radio and Rover case has the room for the controller. You can distinguish them from nameplate.



Fig. 3.1 - S8 PLUS case



Fig. 3.2 - S8 PLUS Rover/ Base case



Fig. 3.3 - S8 PLUS internal case of Rover

III.2 Power supply

Batteries

The standard configuration contains two batteries, a slot for charging batteries (named “charger” for simplicity) and an adaptor. The battery are “lithium-ion” battery (7.4V - 2500 mAh): a technology which has an higher energy-to-weight ratio with respect to NiCd or NiMh batteries, no memory effect, and slow self-discharge when not in use.



Fig. 3.4 - Lithium-ion battery

Charger

The charger can charge both batteries simultaneously. The lights of the charger shows if the battery is being charged (red light CHARGE) or if it's already charged (green light FULL). Red light POWER shows if the charger is powered on and there is also a light which turns on in case of too high temperature (red light TEMP).



Fig. 3.5 - S8 PLUS charger and adaptor

III.3 The antennas

S8 PLUS adopts a UHF all-direction transmitting and receiving antenna. There are three different internal radio settings with different frequency range. The available range are: 410-430 MHz, 430-450 MHz and 450-470 MHz. They are suitable for field surveying, light and durable. The gain is 4 dBi, it was recently improved with respect to the old model that was 2.15 dBi, leading to an increase of the range.



Fig. 3.6 – built-in radio antenna (not in scale)

S8 PLUS adopts a GPRS/GSM all-direction transmitting and receiving antenna with a frequency in the ranges 824-960 MHz and 1710-2170MHz. It is suitable for field surveying, light and durable, the length is about 21.5 cm, the gain is around 1.8-2.2/2.1-3 dBi.



Fig. 3.7 – GPRS/CDMA2000/WCDMA antenna (not in scale)

For S8 PLUS, it is possible to use like additional accessory (not included in the standard configuration) a high-gain UHF all-directional transmitting antenna for base setup. The available ranges are: 410-430 MHz, 430-450 MHz and 450-470 MHz. The antenna is around 1 meter long and can be mounted on a retractable pole or a tripod for better performance. The higher the antenna is, the larger cover area does it has for the radio signal. The gain of the antenna is 5 dBi.



Fig. 3.8 –External radio antenna (not in scale)

III.4 Cables

Receivers cables (LM.GK205.ABL)

This is a multi-function communication cable: it is used for connecting receiver and computer and, through Stonex Assistant, for transferring the static data, updating the firmware and the license.



Fig. 3.9 - Multi-function communication cable

Auxiliary cables (LM.GK185.ABL+ LM.GK224.AAZ)

External power supply cables (LM.GK185.ABL+ LM.GK224.AAZ) can be ordered and used to connect an external battery (red and black clips) to the receiver (small 5-pin LEMO) :



Fig. 3.10 - External power supply cables

III.5 Other accessories

The other accessories are: 2.45 m retractable pole, two kind of brackets depending on the controller, tribrach with plummet, tripod (wood or aluminum, with quick or twist clamps), connector between receiver and tribrach, and measuring tape.



Fig. 3.11 – 2.45m retractable pole



Fig. 3.12 – Bracket



Fig. 3.13 – Tribrach with optical plummet and adapter



Fig. 3.14 – Connector between tribrach and receiver



Fig.3.15 –Measuring tape.

III.6 Controllers

Stonex have actually different model of controller. Getac and new S4C.

The standard configuration of controllers includes the adaptor, the battery, the USB cable. The controller is not part of the accessories for S8 PLUS generation, it must be purchased separately.



Fig. 3.16 - Getac PS236 controller



Fig. 3.17 – Stonex S4 controller

Chapter IV: S8 PLUS Configuration

IV.1 The installation of base and rover

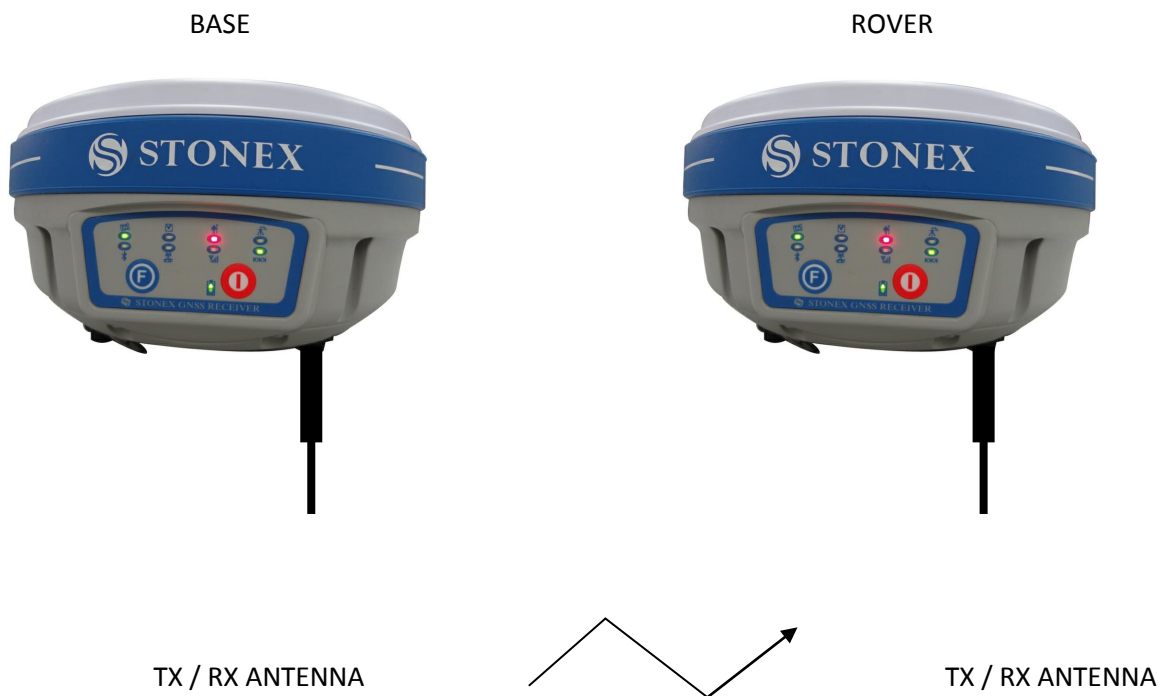


Fig. 4.1 - Base and rover configuration

Installation of Base

- Install the tripod on the chosen location, level it and attach the receiver into tribrach.
- Attach the transmitting radio antenna into the port "UHF". If you are using a direct GSM connection you should attach the gsm antenna into "GPRS" port.
- Switch on the receiver and check the working mode. If it is not correct, please see next paragraph IV.2 for understanding how to select the correct working mode or you can

change it later using the handheld software.

- Switch on the handheld and start the software for the radio channel configuration and inserting the base coordinates, otherwise it is possible to make the settings by Stonex Assistant pc software.

Installation of Rover

- Fix the bracket on the pole, fix the handheld into the bracket, put the rover on the pole and attach receiving radio antenna into the port "UHF" or gsm antenna into the port "GPRS", depending on the connection used.
- Power on the receiver and check the working mode. If it is not correct, please see next paragraph *IV.2* for understanding how to select the correct working mode or you can change it later using the handheld software.
- Switch on the handheld and start the software, then you can do the advanced setting of the instrument and finally start the survey.

If you want to take very accurate measures (around or below cm accuracy), we recommend you to use another tripod also for the rover.

IV.2 The configuration by using keys

How can you select the working mode?

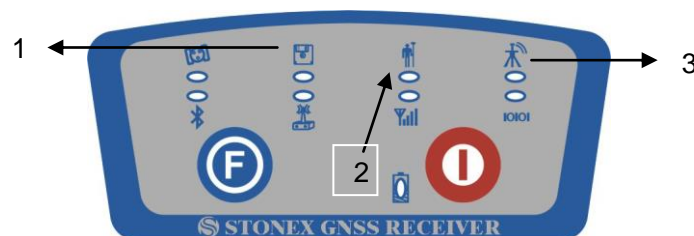
- Insert the battery in the battery box, then press and hold I key + F key: the receiver will start.
- Keep pressed I key + F key until all lights blink at the same time (Fig. 4.2), then release the keys.



Fig. 4.2 - S8 PLUS, all led blinking at the same time

Now every time you press F key, the STATIC/ROVER/BASE lights will switch on in the corresponding order. You can select three different red lights, each of them refers to one working mode.

- Press I key when the chosen light is blinking and the receiver will start in the selected working mode . Summary of working modes:



1. Static mode
2. Rover mode
3. Base mode

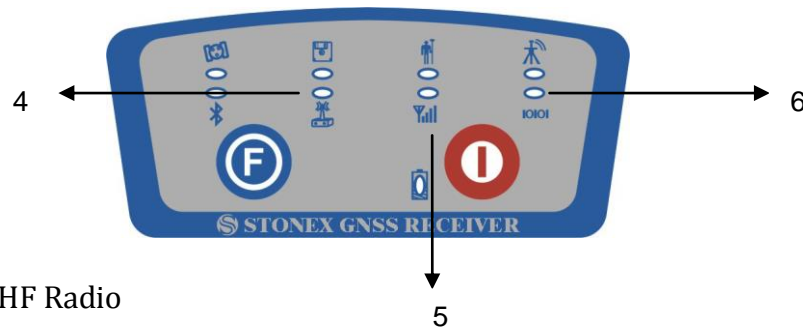
Fig. 4.3 - S8 PLUS summary of working mode led

How can you select data link?

- After you entered working mode, press and release F key, the UHF/GPRS/EXT lights will blink by turns at every pressure of F key. Then you can select different green lights, each

one refers to different data link. This situation refers only to the rover and base mode, since in static mode there is no green light blinking.

- Press I key when the chosen light is blinking and the receiver will start in the selected working mode. Summary of data link types:



4. Internal UHF Radio
5. GPRS\GSM module
6. External radio

Fig. 4.4 - S8 PLUS summary of data-link led

The next time you will switch on again the receiver, the working mode and data-link will be the last selected.

If you prefer, you can select the correct data-link by handheld software.

As regards the advanced working parameters, for instance sampling interval, minimum elevation angle, antenna height, etc, they can be set by handheld software or by Assistant, without modifying the parameters the receiver will work with default parameters.

IV.3 Standard operation of leds

Static mode

The STATIC and power light will keep lighted. When satellites fulfill the conditions (at least 4 GPS or 4 GLONASS satellite, PDOP < 3.5), receiver will start recording epochs, you will hear a

beep, STATIC light will flash according to sampling interval (if you don't set up, the default is 1 second) and the satellite light will flash a number of times equal to the locked satellites.

Base mode

After setting up the mode, the base will enter into the transmit mode. If external radio was set and EXT light will flash every one second means the base transmit normal, the interval is 1 second. In the same way using built-in radio INTERNAL RADIO light will flash. If you need to change the transmit conditions, you should connect the handheld with mainframe by cable or Bluetooth firstly.

Rover mode

Bluetooth and power light will keep lighted. The satellite light will blink according to the number of satellites as described for static mode.

Using GPRS/GSM, GSM/GPRS light starts to blink with the frequency of the received data packets. In the same way using built-in radio UHF light will flash.

IV.4 How to measure the antenna height

The height of receiver is 99mm, the diameter is 186mm, the height from the center of the sealed rubber ring to the bottom is 62mm and the height from the phase center to the bottom is about 88 mm for L1 frequency and 91.5 mm for L2 frequency.

The antenna height is conventionally defined as the vertical height from the phase centre to the ground surveyed point (the distance "h" in fig. 4.5). It is not possible to measure it directly: you have to measure other reachable heights (the distances "a", "d", "s" in fig.4.5). The distance "a" is the vertical height from the ground to the mainframe's bottom, "d" is the vertical height from the ground to the middle of the rubber ring: both are defined as "vertical heights". On the contrary the distance "s" is measured from the ground surveyed point to the middle of the rubber ring and is called "slant height". You have to choose the measuring method according to

the used software:

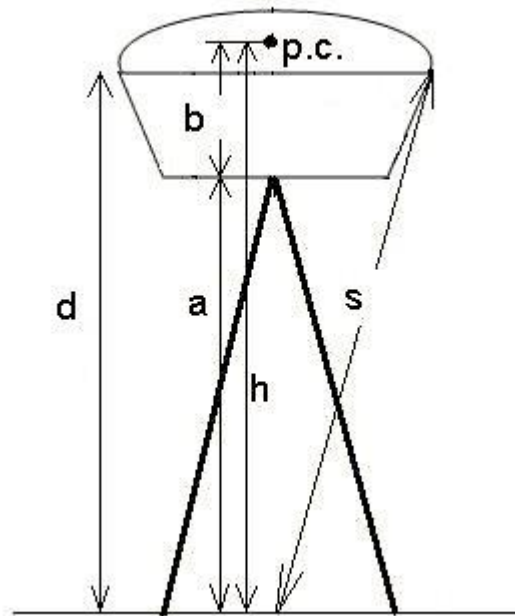


Fig. 4.5 - Different measures of the antenna height for S8 PLUS

1. In rover and base mode you have to insert the correct antenna height according to RTK software. In *STONEX® SurvCE*, for example, the distances “a” and “s” are permitted: software will add the distance “b” to “a” (or convert “s”) to obtain “h”. For other software please read the specific user guide.
2. In static mode you have to write the correct antenna height in .DAT or RINEX file. If you are using *STONEX® GPS Processor* you have to specify the correct antenna height before processing .DAT data or exporting it into RINEX format. Please read the specific manual of *STONEX® GPS Processor*, it should be noted that however the slant height “s” corresponds to the definition “Line of Edge of antenna”, “a” to “Bottom of antenna” and “d” is equal to “Bottom of antenna mount”.

Chapter V: STONEX[®] Assistant for S8 PLUS

STONEX[®] Assistant is a tool which is conceived for aiding the user to make easier different operations with the receiver S8 PLUS. It is contained in the bundle CD, the actual version is 1.62.

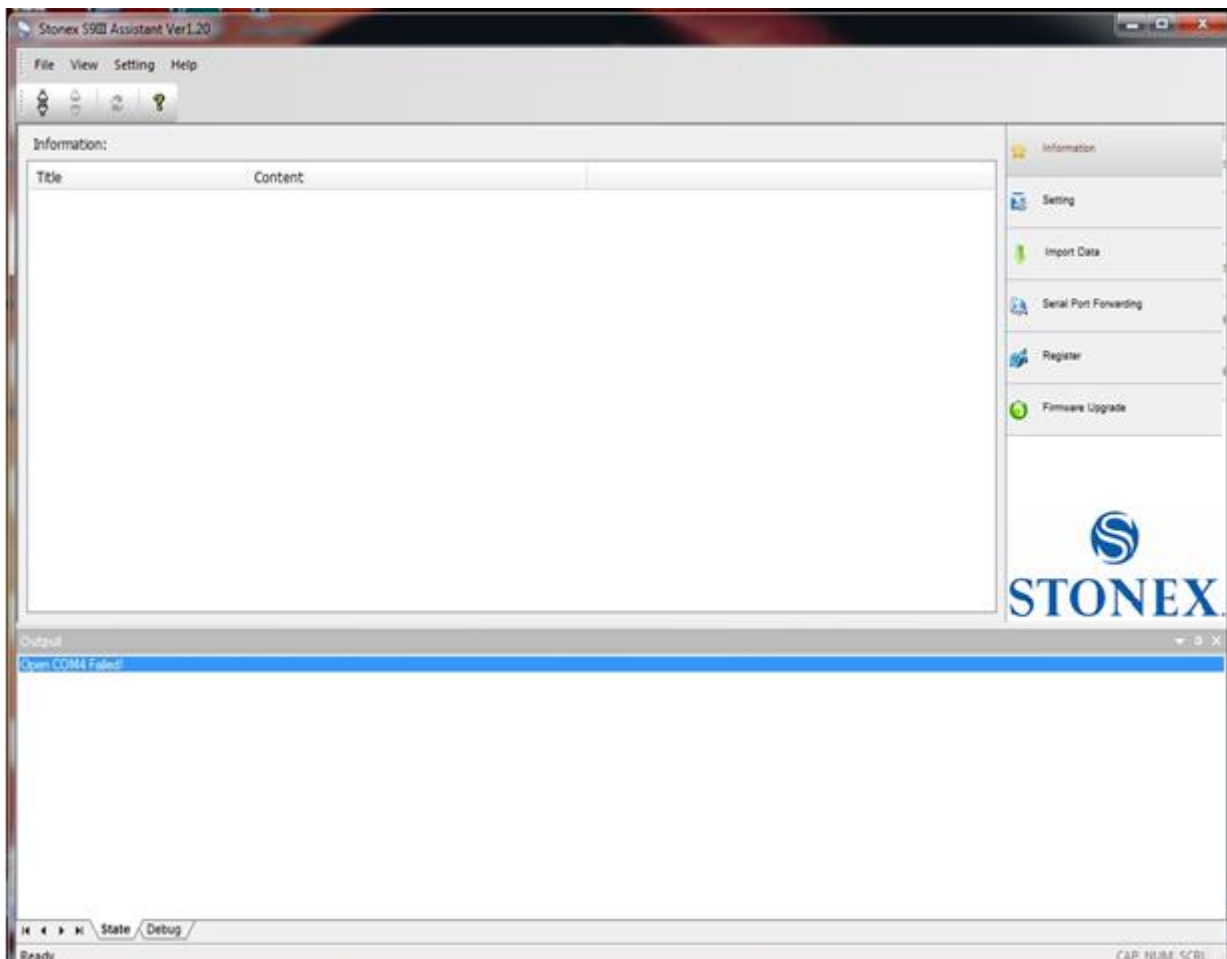


Fig. 5.1 – Main page of Stonex Assistant

The opening page is showed in Fig. 5.1. It reports internal system configuration of the GPS

receiver S8 PLUS after get PC connection.

V.1 Start Stonex Assistant on your PC.

Connect the S8 PLUS to the PC using Lemo7 – USB/Serial cable.

Switch on the receiver: automatically the program should search the COM port where the receiver is connected. If this doesn't happen, for example at the first starting of Assistant in the Pc, you have to disconnect from the wrong port and select the right COM port manually. Click on the icon showed below by number "1" for disconnection, then click on icon "2" for connecting again, a new windows will be opened ("3"):

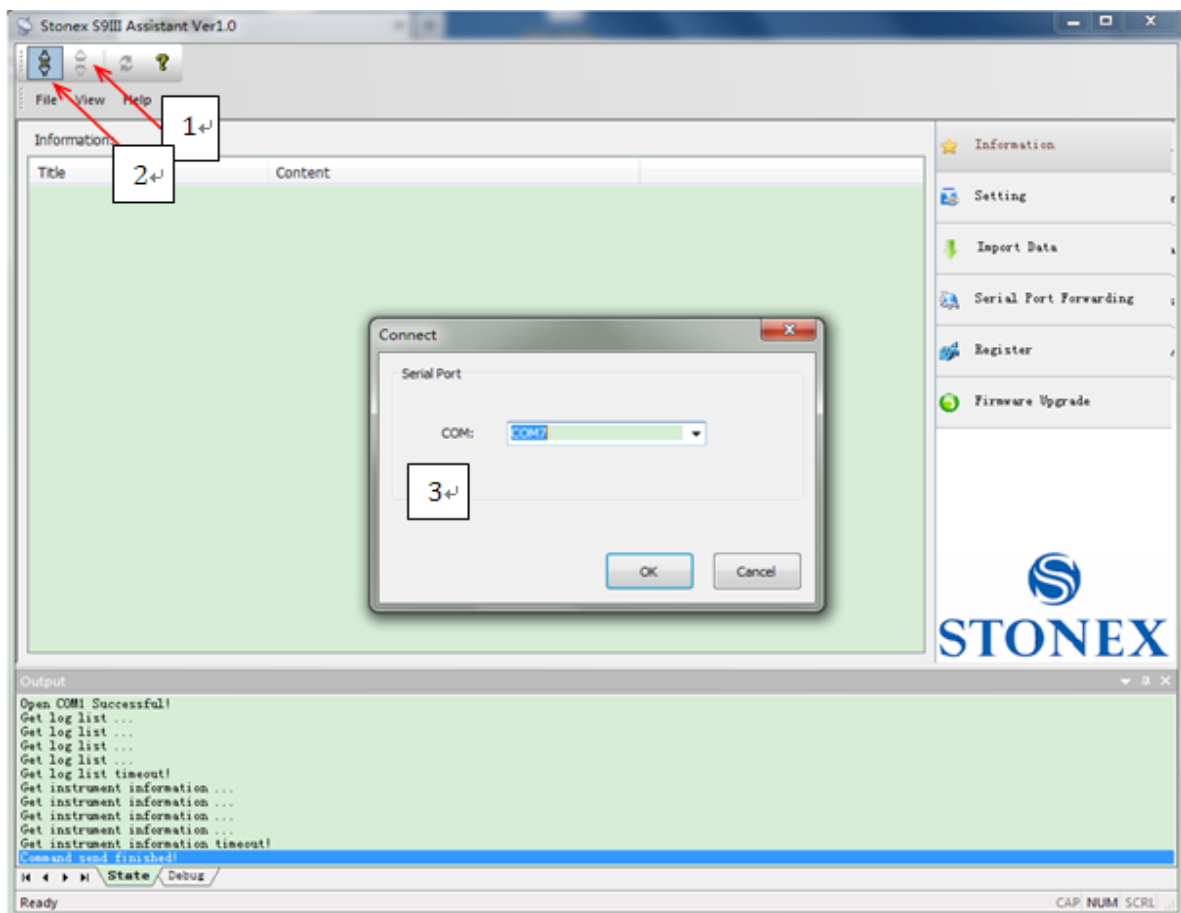


Fig. 5.2-Opening COM port

Here you have to insert the correct COM number. Usually when the cable is inserted on the USB

port, the computer should create a new “virtual” serial port called “AT91 USB to serial adapter” with a new COM number, you should check in the Windows “device manager” of Pc and insert this number, then select “OK” button. When you find the right COM port, you should see the screen shown in Fig 5.3 that show you in the main window the system information.

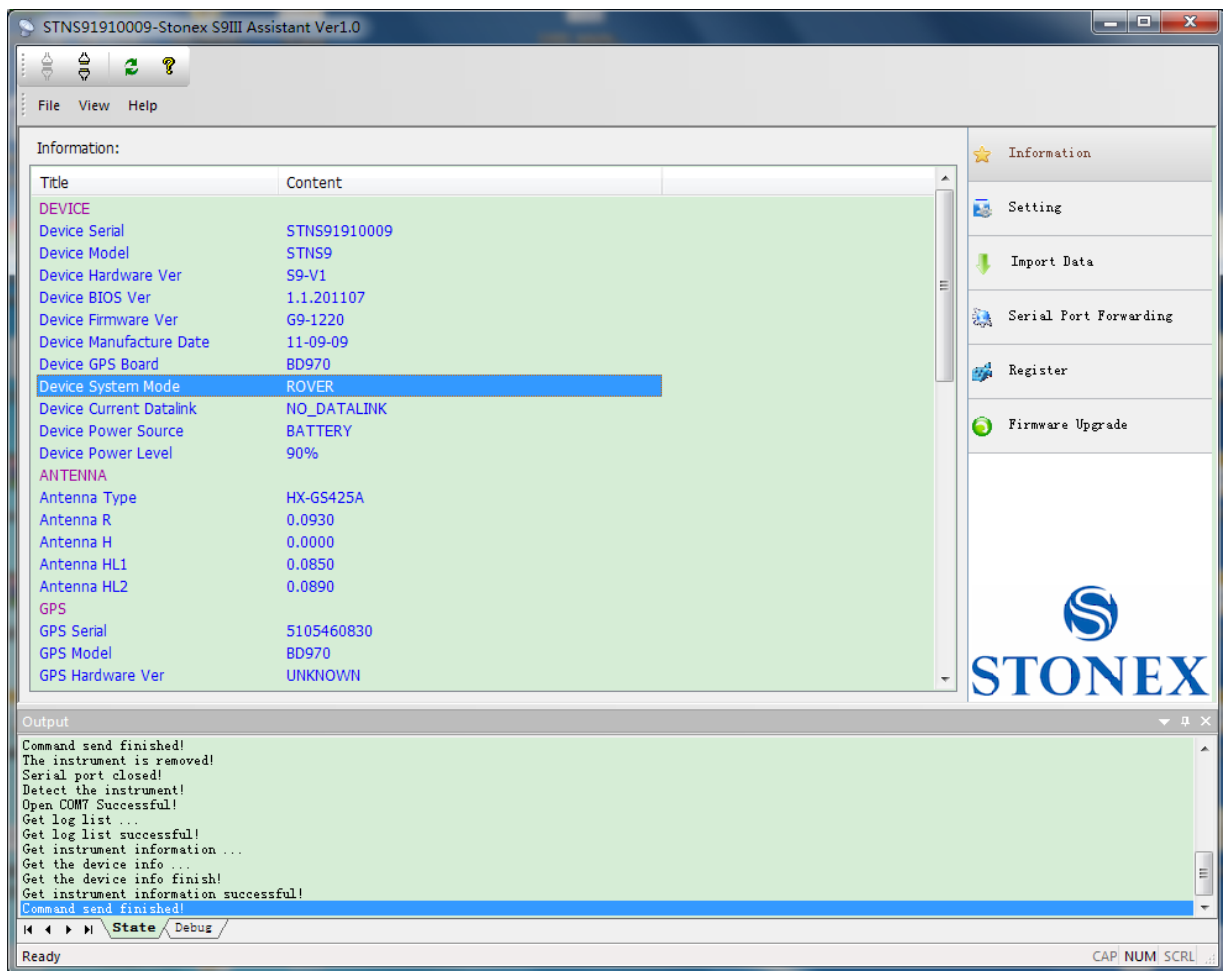


Fig. 5.3 – Information page of Stonex Assistant

From the showed information you can understand about: the battery level, the firmware version of GNSS board and mother board, the antenna information, the firmware of radio and gprs internal device, the free disk space, the current working mode and datalink setting.

V.2 Settings

If you click on the command “Setting” on right, a new window is opening as in Fig. 5.4.

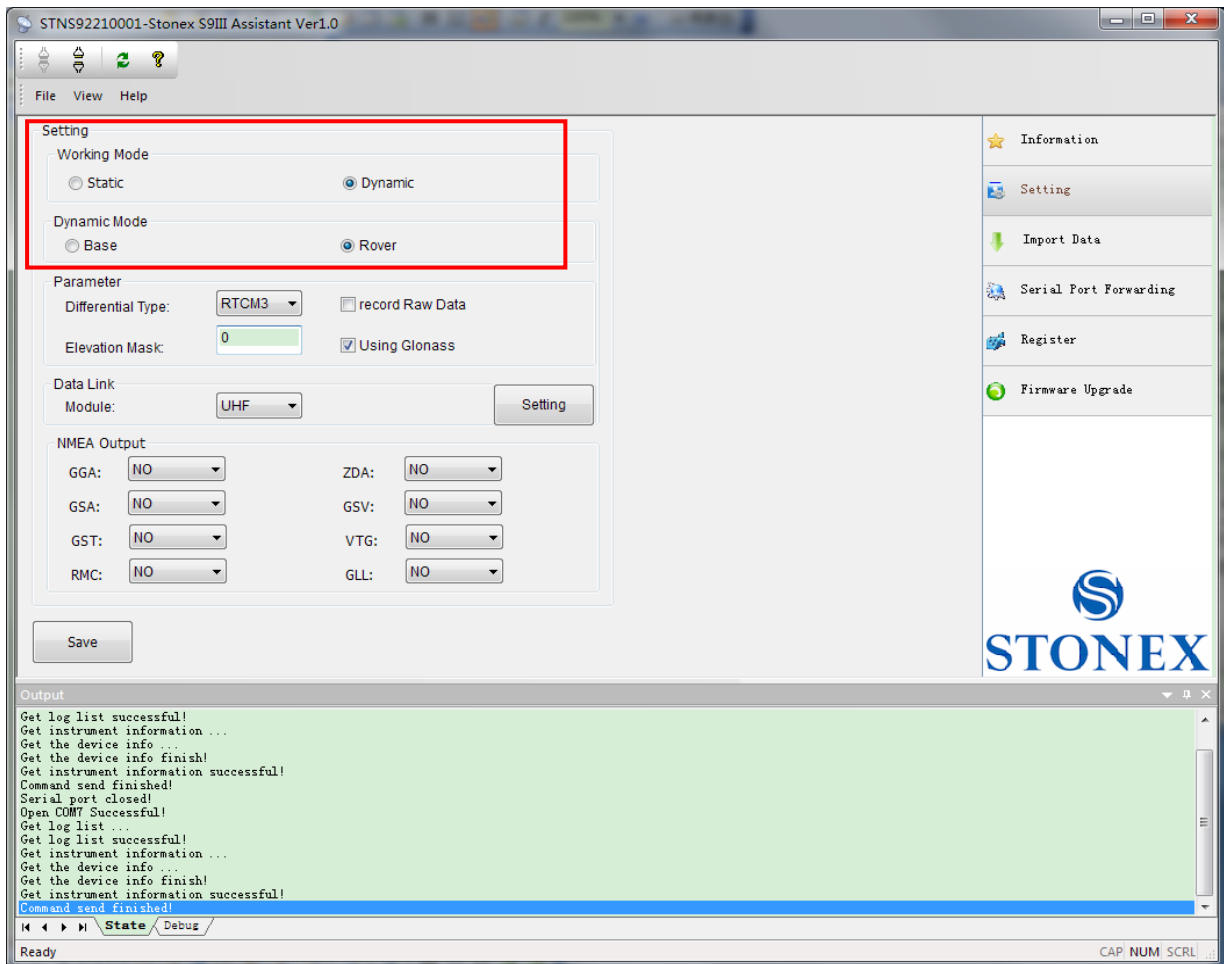


Fig. 5.4 – Setting window

You can set the survey working mode Static, Dynamic --> Base/Rover (see the red rectangle in Fig. 5.4) and below in “Datalink → Module” the kind of datalink (NETWORK, UHF, EXTERNAL, BLUETOOTH) of S8 PLUS.

At pagg.14-15 you can find a definition of the working mode and datalink.

V.2.1. Static Data Survey

Static mode data entry page is reported on Fig 5.5:

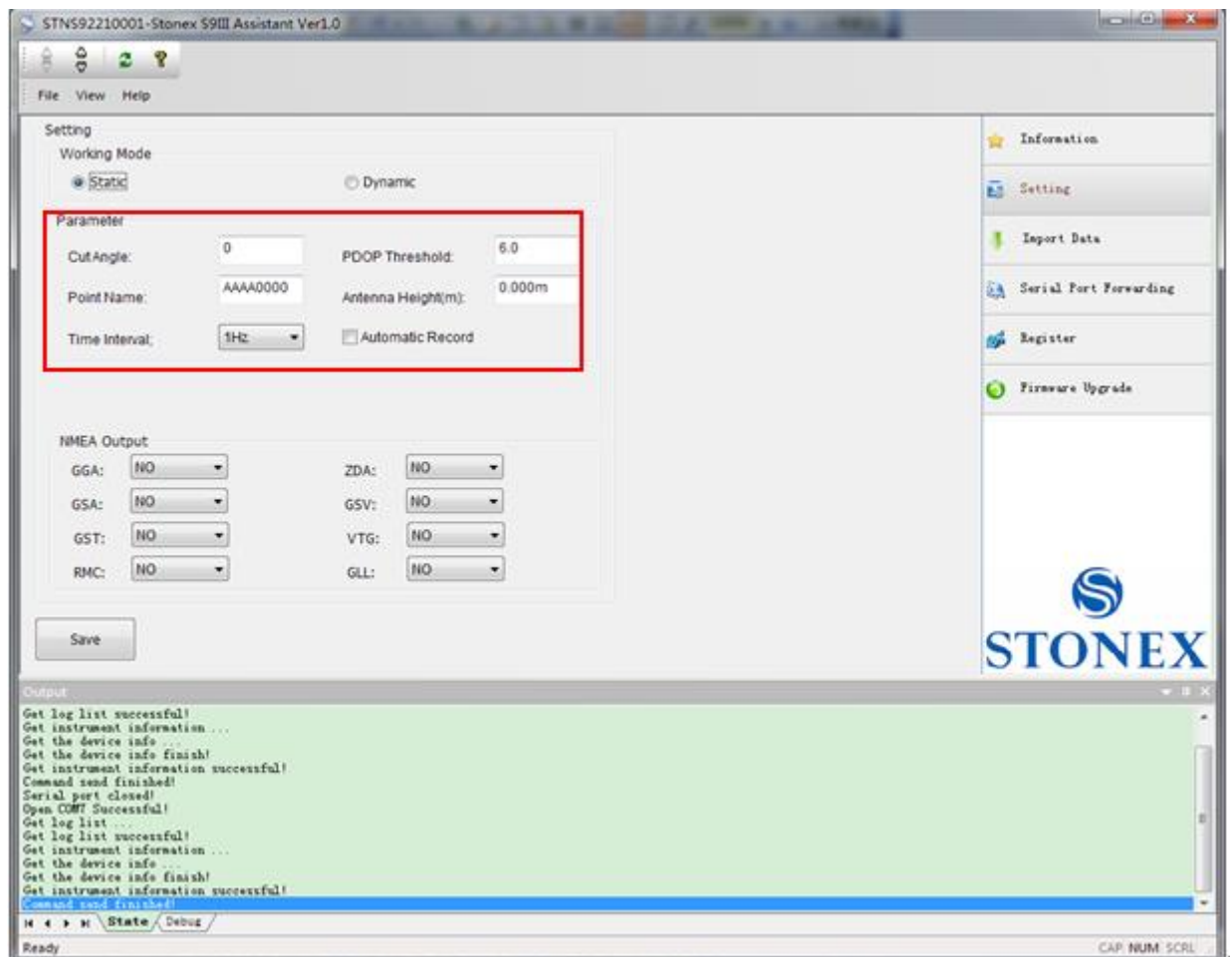


Fig. 5.5 – Static working mode

From here you can control following data settings:

Cut Angle: Define the minimum elevation of satellite to be collected in order to avoid noisy satellites (suggested value between 20° and 10°).

PDOP Threshold: Define the maximum value of PDOP for valid GPS data in order to avoid bad satellite configuration in the sky (suggested value below 3).

Point Name: Assign a “name” to the point you are surveying, please consider that only the first 4 digits are included into the name.

Antenna Height: Introduce GPS antenna height from ground, this is an important point, it was discussed in more details in Par IV.5 .

Time Interval: Set sampling frequency between different GPS epochs. The sample interval can be set also higher than 1 Hz from special application but maximum frequency depends on the GNSS internal board settings, S8 usually could be set up to 20 Hz.

Automatic Record: Start automatic GPS static survey after power on. For static survey this option strictly NEED to be enabled in Stonex Assistant.

When the configuration is completed, click on button “Save” to update the Receiver configuration.

V.2.2. Dynamic:

In the Dynamic working mode (Rover or Base) the following parameters should be specified, as you can see in Fig. 5.6.

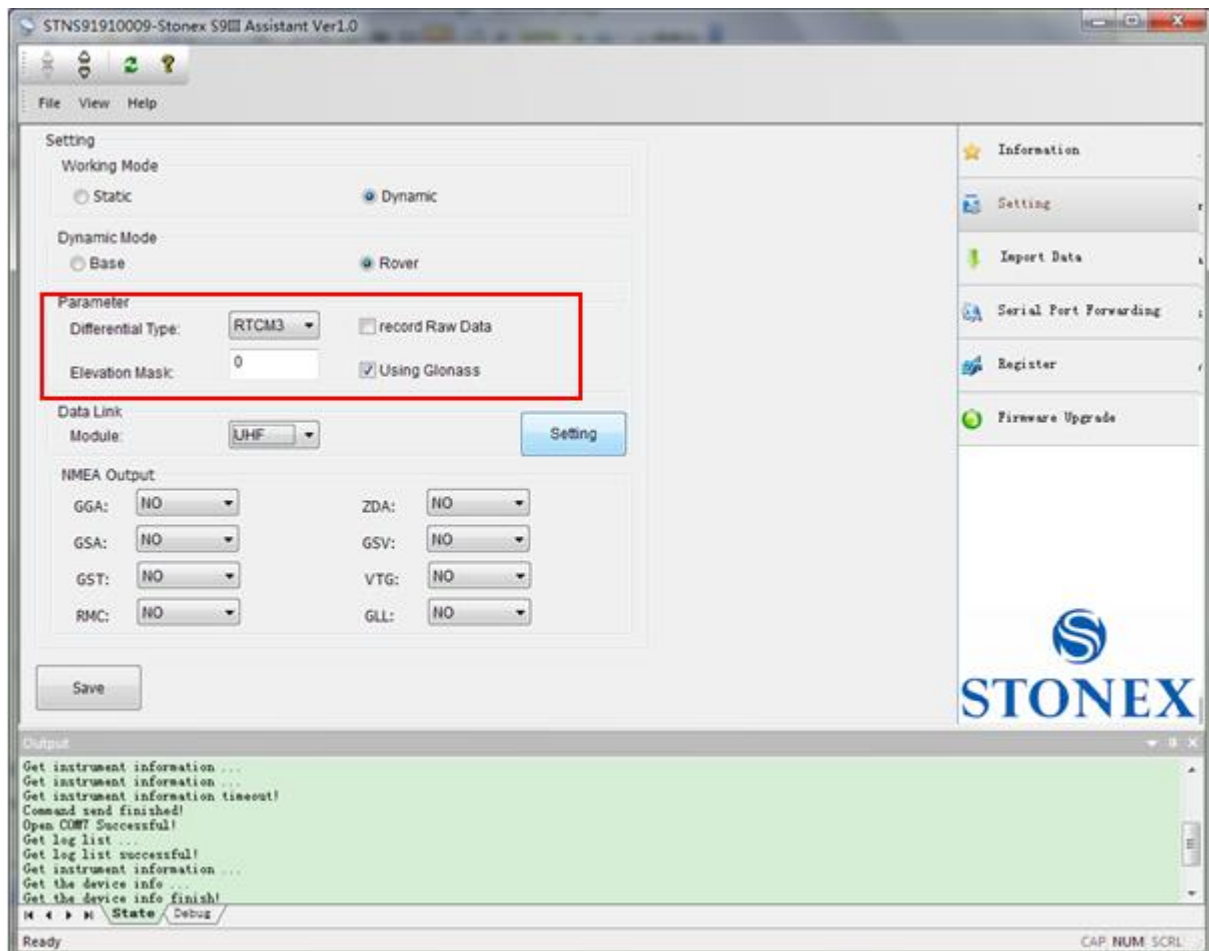


Fig. 5.6 – Dynamic Working mode parameters

Some definitions:

Differential type: To select the format of the differential corrections transmitted or received.

Elevation mask: Define the minimum elevation of used satellite to be collected in order to avoid noisy satellites (suggested value between 20° and 10°).

Record Raw data: to record raw data inside memory of S8 PLUS. This function is useful for “stop & go” survey.

V.2.2.1. Base coordinates setting

If you choose “Dynamic” and “Base” option, a “Base Setting” button will appear on the screen,

see red arrow in Fig. 5.7. Click on it and the Base Setting window will appear on the screen (Fig 5.8):

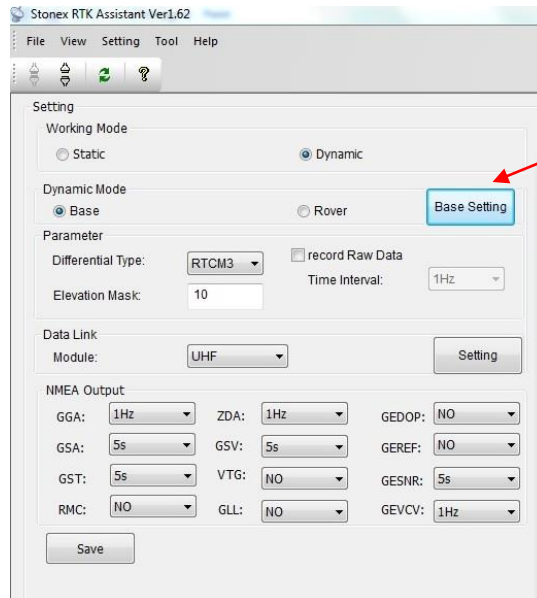


Fig. 5.7 – Base Setting button

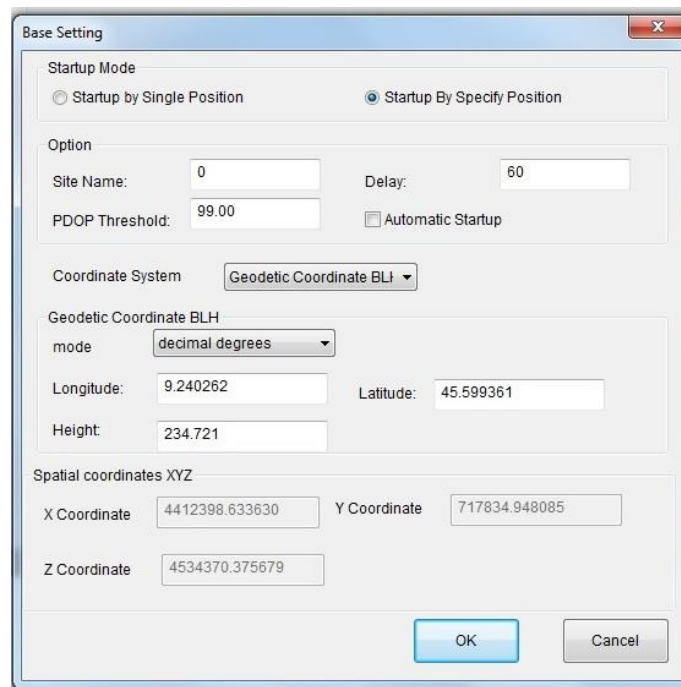
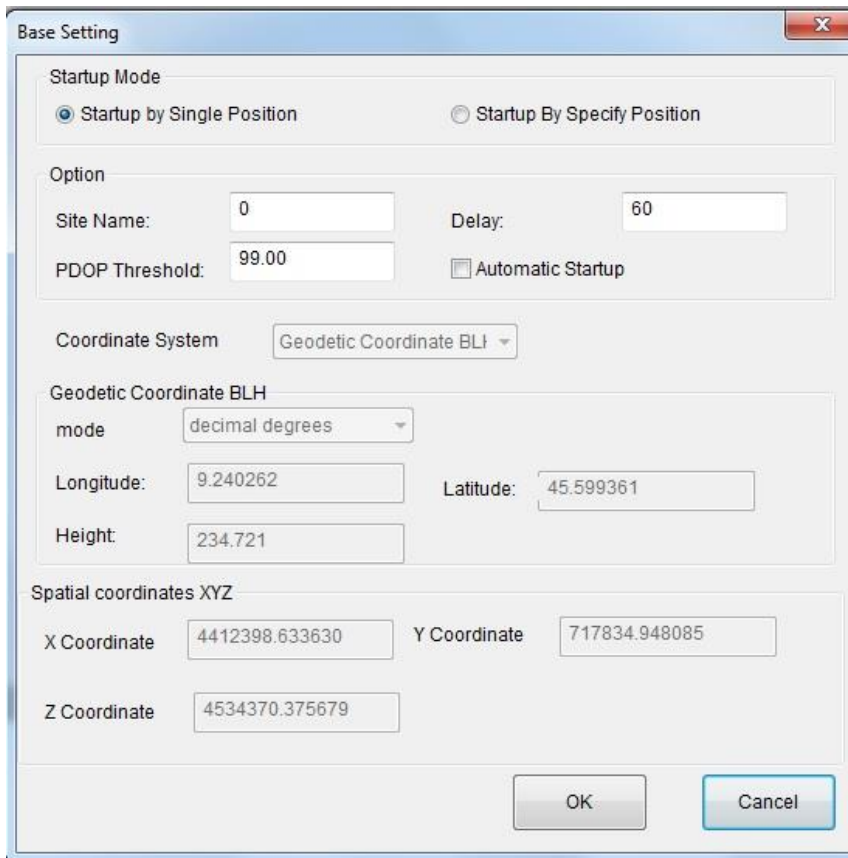


Fig. 5.8 – Base Setting window

Inside this form, you can choose if the Base coordinates must be inserted manually (“Startup By Specific Position”) if known, or calculated from GPS observations (“Startup By Single Position”) if unknown.

Startup By Single Position

If checkbox “Startup by Single Position“ is selected, the GPS Receiver will calculate the geographical coordinates of the base using an approximate value from GPS observations. The time delay to be wait before switching on for base transmission must be inserted in the Text box “Delay“. You can also specify a maximum PDOP allowed for starting base transmission in “PDOP Threshold” and a name for base site in “Site Name“. If the box “Automatic Startup” is active, when the conditions are fulfilled base will start to transmit without waiting for a field software command.



Base Setting

Startup Mode

Startup by Single Position Startup By Specify Position

Option

Site Name: Delay:

PDOP Threshold: Automatic Startup

Coordinate System:

Geodetic Coordinate BLH

mode:

Longitude: Latitude:

Height:

Spatial coordinates XYZ

X Coordinate: Y Coordinate:

Z Coordinate:

OK Cancel

Fig. 5.9 – Startup By Single Position

Click “OK” to confirm your data entry.

Startup By a Specific Position:

By choosing the “Startup by Specific Position” it is possible to introduce directly the geographical coordinates of the base (Known point). In mode box (red arrow 1) you can select different format of geographical coordinates. You can insert also geocentric coordinates X,Y,Z by changing option in the box “Coordinate system” (red arrow 2).

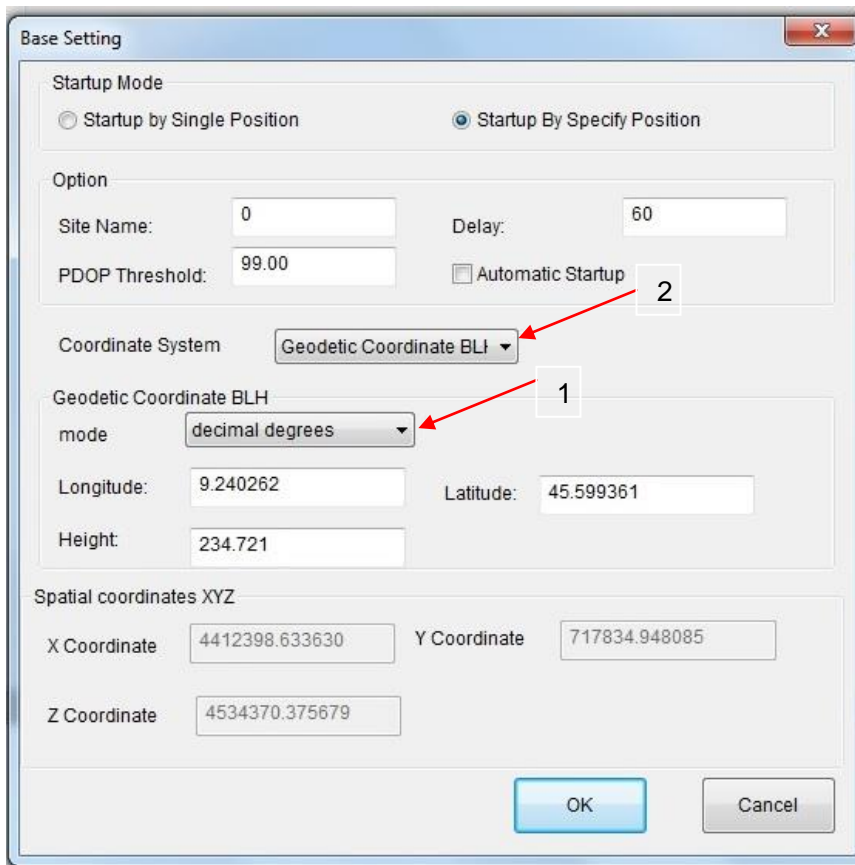


Fig. 5.10 – Startup by a specific position

V.2.3. Data Link

Here you can select the type of datalink used to get/provide differential corrections.

Four different options are available for “rover” mode: GPRS/GSM modem (“Network”), internal radio (“UHF”), external radio or external device (“External”), Bluetooth device (“Bluetooth”), or no datalink (“No Data link”).

In the “base” mode we have the same first four choices (Network, UHF, External, Bluetooth) and another choice, that is “Network and External”, which allows base to transmit at the same time to the GPRS/GSM modem and to the external device.

V.2.3.1 Network

This option is relative to get GNSS differential corrections from a CORS system.

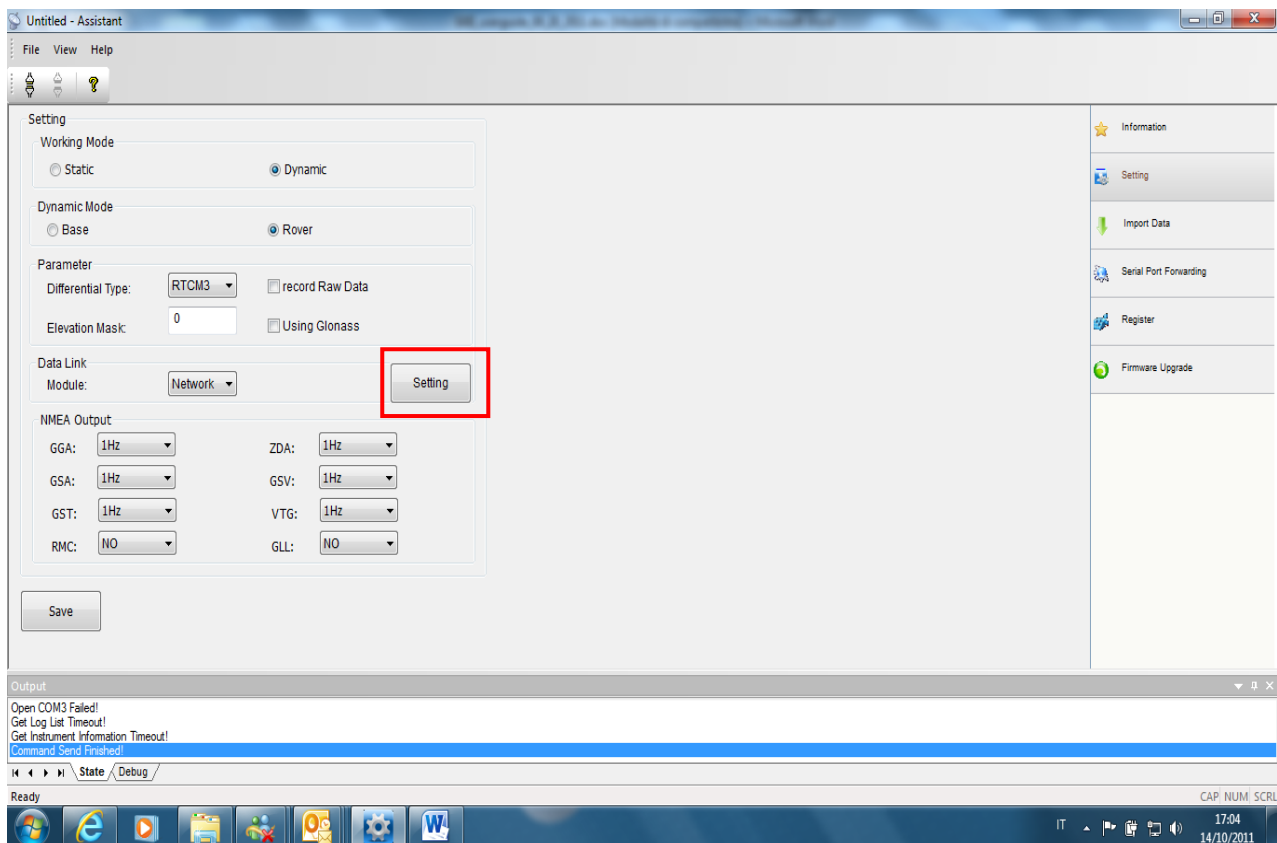


Fig. 5.11 – Network

If you will click on the button “Settings” (red rectangle in Figure 5.11), a new form will open. From here you can choose the type of connection:

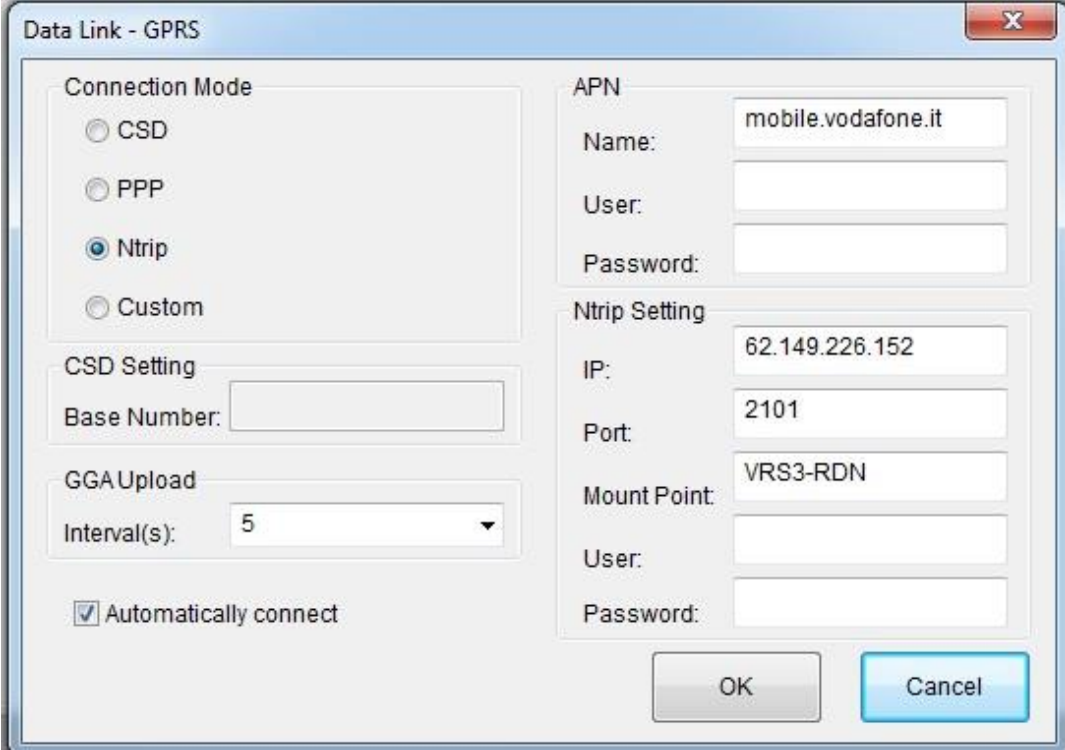
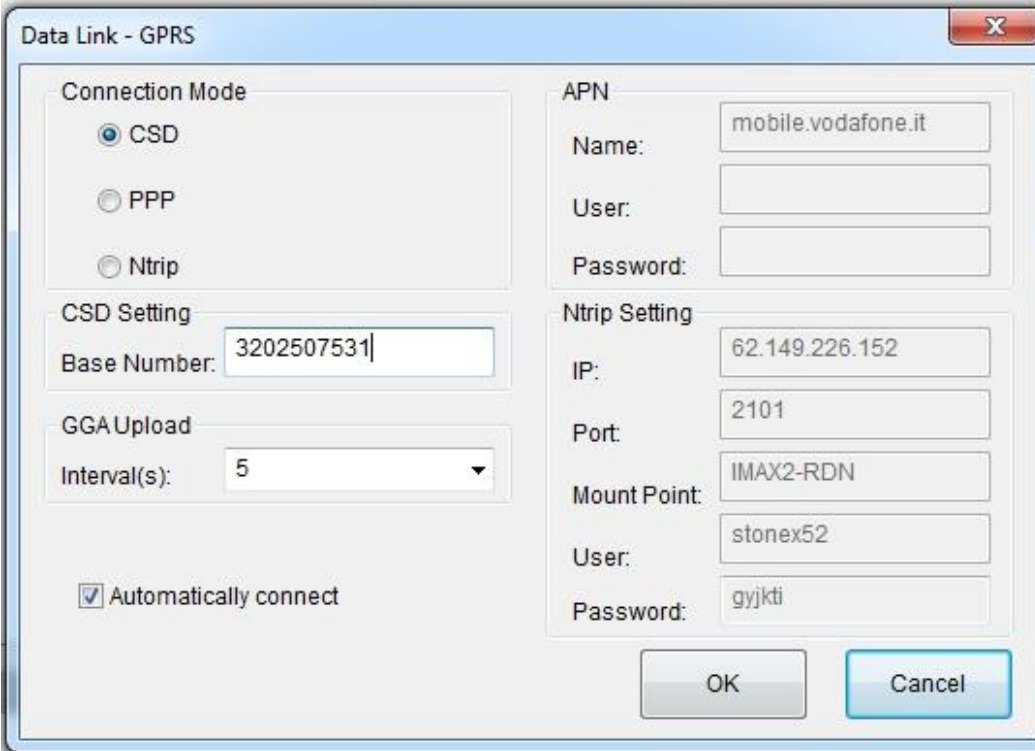


Fig. 5.12 – Network menu

CSD: Normal dial GSM call, using a phone number that you can insert in “Base Number” text box. When user need to set a rover for a direct call, the right part of the page becomes grey (see in Figure 5.13), in the left part he should insert:

- a) the Base SIM telephone number
- b) set an interval for GGA upload (the suited interval depends of the correction source)
- c) enable the automatic connection.

In the base configuration he should only enable the automatic connect, not other set is required, it is also necessary to switch on first the base and then the rover. Anyway you can also refer to a specific tutorial regarding how to set a direct call between two S8 PLUS.



Data Link - GPRS

Connection Mode

CSD

PPP

Ntrip

CSD Setting

Base Number: 3202507531

GGA Upload

Interval(s): 5

Automatically connect

APN

Name: mobile.vodafone.it

User:

Password:

Ntrip Setting

IP: 62.149.226.152

Port: 2101

Mount Point: IMAX2-RDN

User: stonex52

Password: gyjkti

OK Cancel

Fig. 5.13 – CSD Settings

PPP: For VPN (Virtual Private Network) users, where each SIM card has a static IP address. Therefore the rover can be connected directly to the base via entering the base IP. The user have to set into the right part (see Figure 5.14):

- a) APN parameters for internet connection, that depends on the provider of the network connection, usually only “Name” is required.
- b) IP address and port.

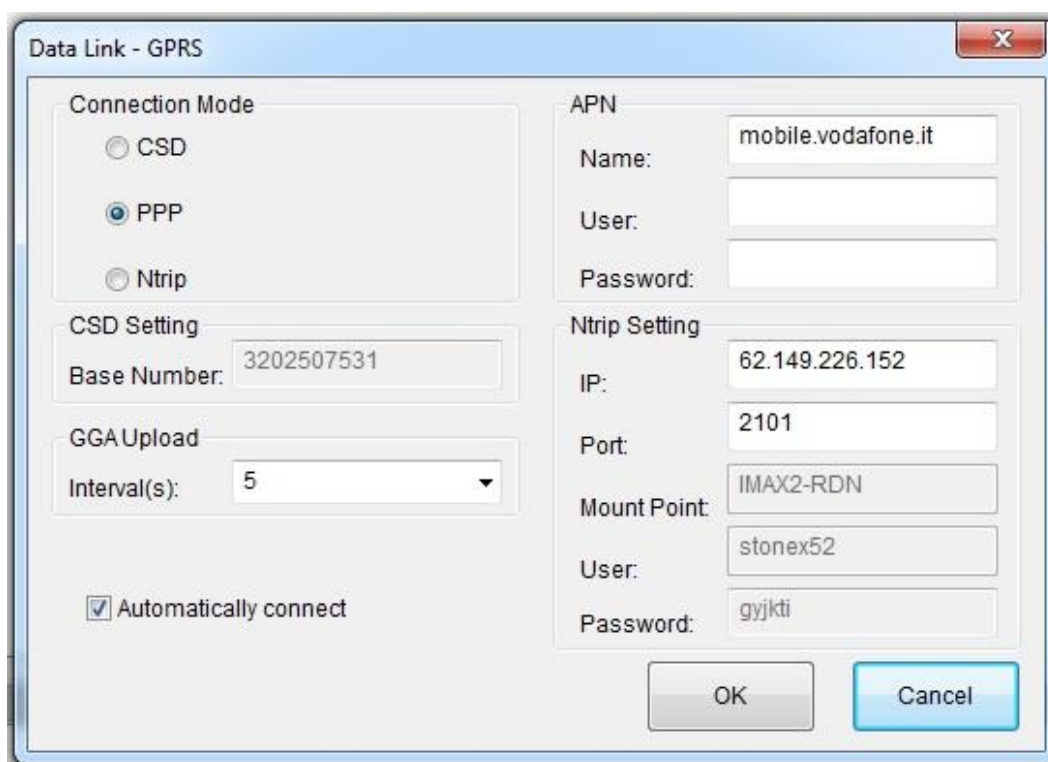


Fig. 5.14 – PPP Settings

NTRIP: It is the most common. Connection of a rover to a provider using data transfer in accord with NTRIP protocol by internet GPRS connection. If you select this option, you have to insert the following data in the right side (see Figure 5.15):

- a) APN parameters for internet connection.
- b) NTRIP setting parameters: IP address of CORS provider, Port number, Type of Mount Point, User Name and Password of the user.

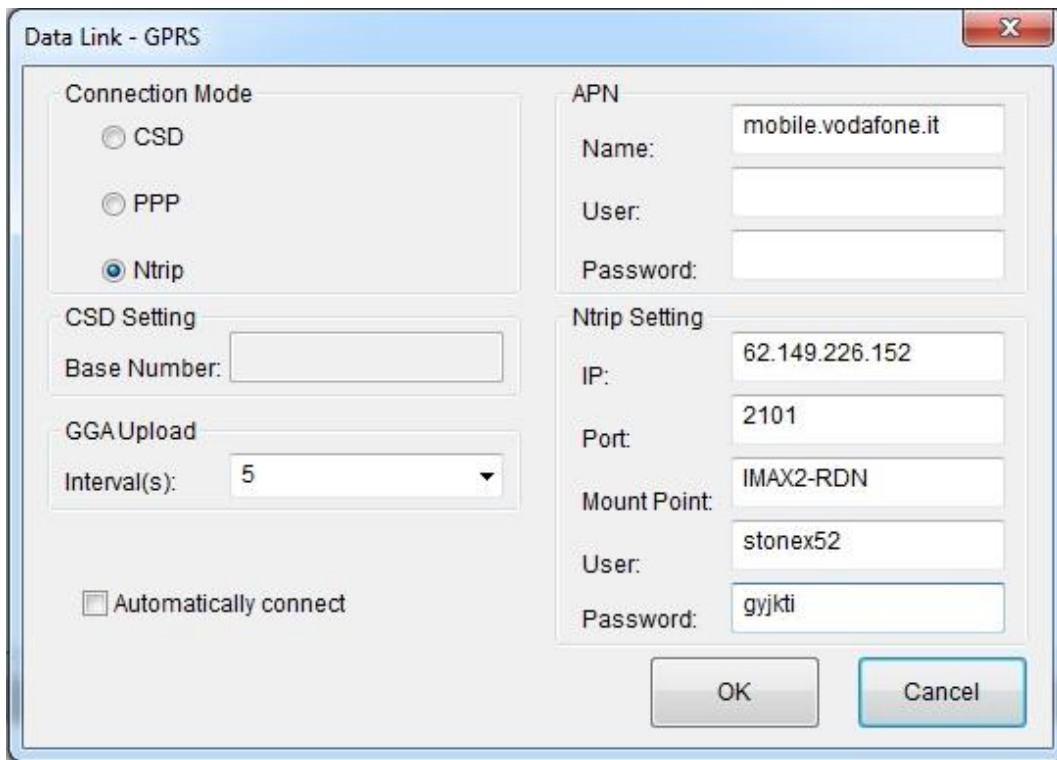


Fig. 5.15 – NTRIP Settings

Custom: It is used for other internet GPRS connection to a network software/server that doesn't require a user name and a password or only a password. If you select this option, you have to insert the following data in the right side (see Figure 5.16):

- a) APN parameters for internet connection.
- b) NTRIP setting parameters: IP address and Port number of computer where the software runs, Type of Mount Point and Password if required (usually for base it is not required so you can it empty).
- c) Enable the automatic connection.

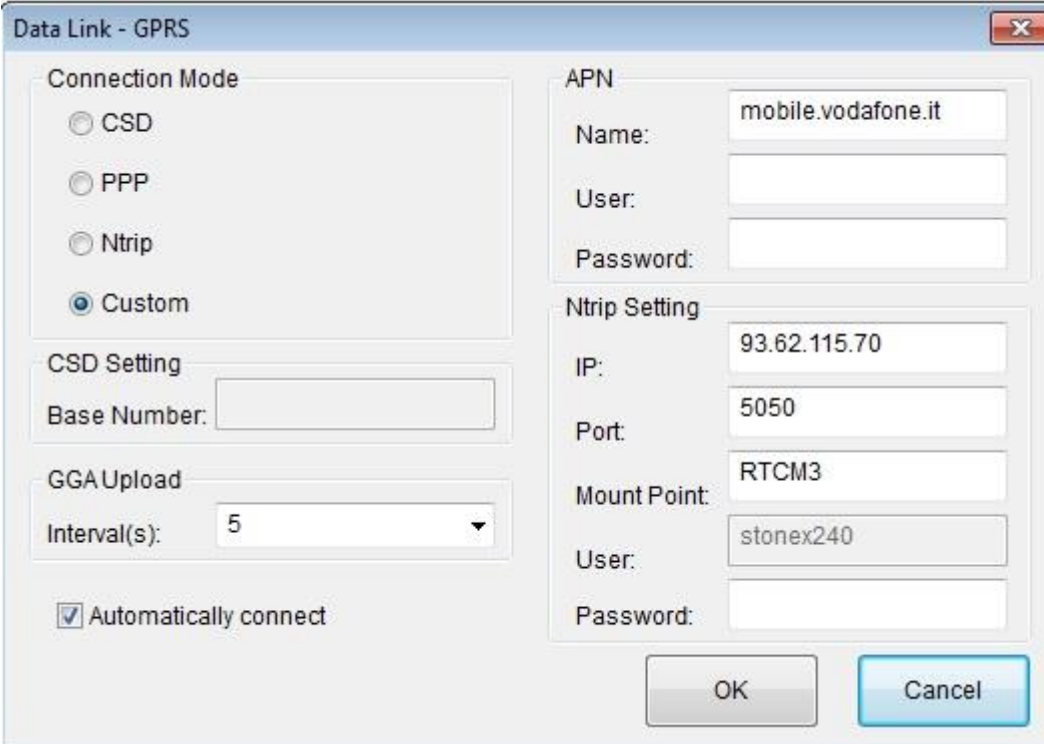


Fig. 5.16 – Custom Settings

GGA Upload: input window provide the interval of NMEA GGA string upload, this string contains the rover coordinates that must be sent to the CORS or base, the proper interval depends on the base, usually it is not important to set it.

Automatically connect: when this box is enabled, the receiver, as soon as it is switched on, will try automatically the connection to the previously stored server without need that user sends any command through a software.

Click on “OK” button to confirm your entry.

V.2.3.2 UHF Radio

Choose this option when you are taking differential corrections from your GPS Base.

If you select UHF from the scroll box and click the “Setting” Button a new form will open as you can see in Fig 5.17, where you can introduce following data: Frequency settings, Used channel

number, Protocol and Spacing, Transmitting power.

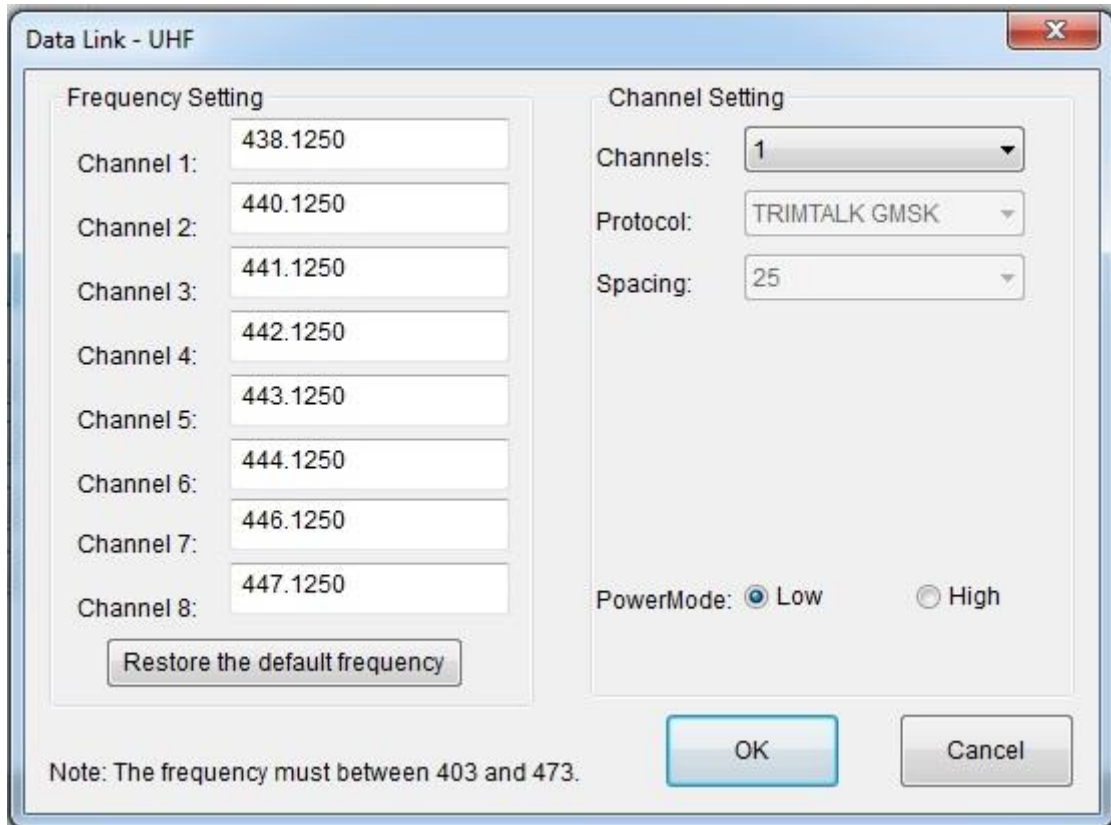


Fig. 5.17 - UHF Radio Settings

Frequency setting: insert the frequency, expressed in MHz, of the radio link associated to each channel. There are 8 channels available in the internal UHF radio. The allowed frequencies are in the range 410-470 MHz.

Channels: Selected the default radio channel active after power on.

Protocol: Selected the use protocol, that should be suited on which radio is at the other side. The available protocol are: "Trimtalk 450S", compatible with Trimble and Pacific Crest radio, "Satel", compatible with Satel radio, and "Stonex type 1", compatible with S9 first generation and South receivers.

Spacing: it cannot be modified, it is 25 KHz.

Power mode: Select the transmission power level, low is 0.5 Watt while high is 2 Watt.

Click on button “OK” to confirm your choice.

V.2.3.3 External

This option give us the possibility to use an external device, usually an external UHF Radio or an external Bluetooth device connected by cable at lemo-5 connector.

If you select “External” and Click on “Settings”, a new form will open and in this form you can insert the baud rate of the external device:

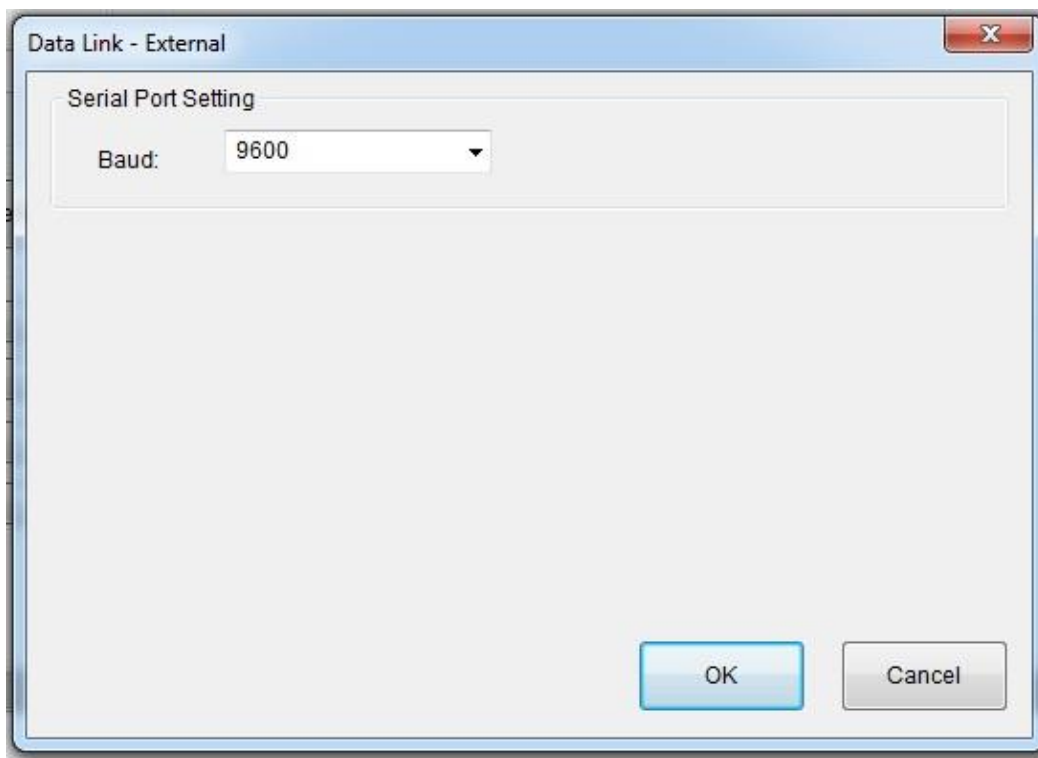


Fig. 5.18 - External radio baud rate

Click on button “OK “ to confirm.

V.2.3.4. Bluetooth

This option give us the possibility to use the internal Bluetooth device for RTK data exchange.

In this case the same channel used for sending commands to receiver and getting position information from receiver is used also for transmitting the differential corrections from handheld to the receiver, for example if the handheld is connected through internet or it is connected to a mobile phone connected to internet. Please remember that if you select Bluetooth as datalink, you do not see any datalink led on the display.

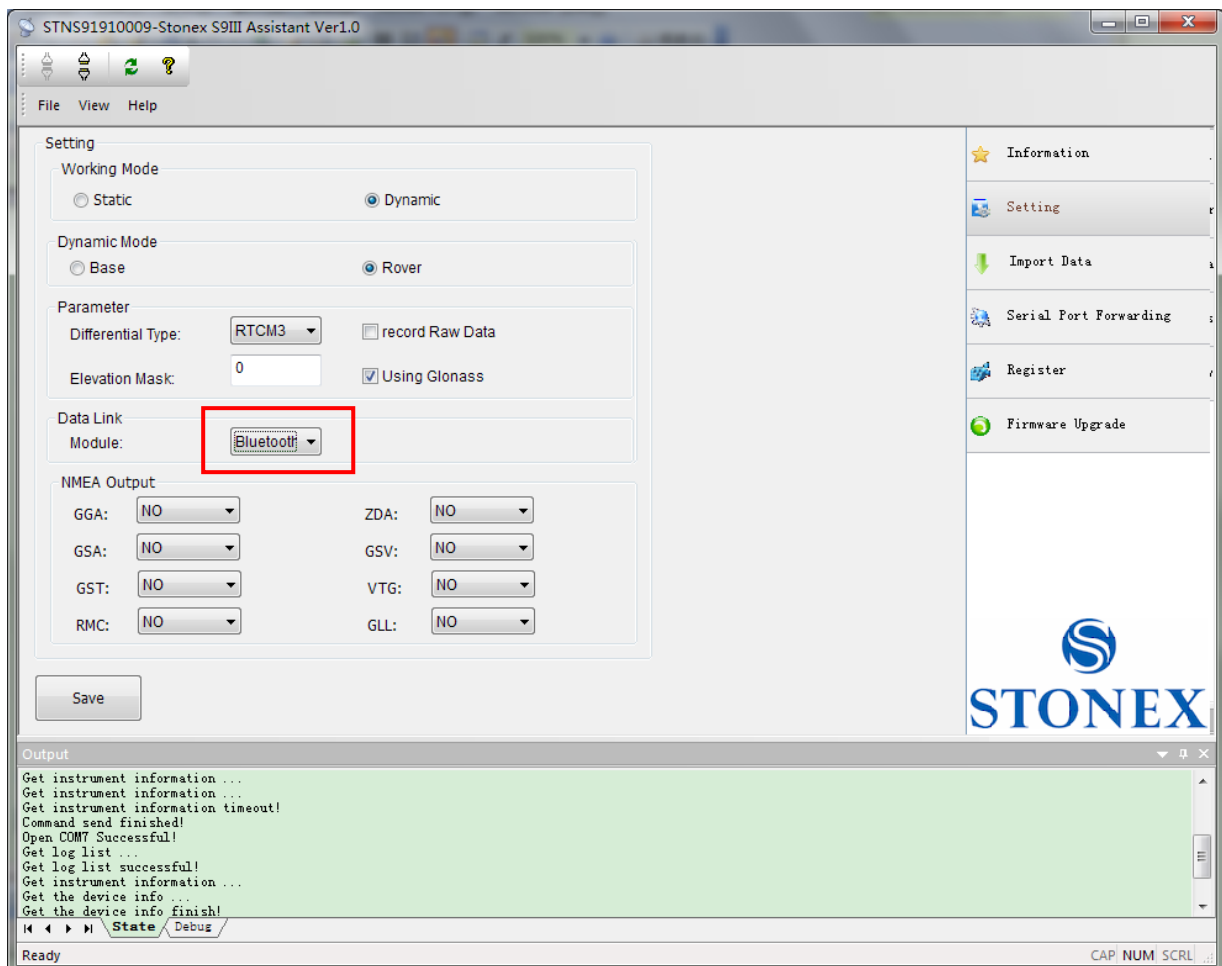


Fig. 5.19 - Bluetooth

When you have completed all your selection, please click on “Save” button and the configuration will be stored inside S8 PLUS memory.

V.2.3.5. No Datalink – only for Rover

This option has to be selected if customer don't need any kind of corrections.

V.2.3.6. Network and External - only for Base

This option give to the base the possibility to transmit the corrections through two different data links at the same time: to an external device and to the GSM/GPRS modem. This case can be useful for example if the external device is an external radio, but the customer knows that can be too far for receiving the radio signal, so he can put a SIM card inside his rover and try a direct GSM call to the base, this is an example but there can be others application of this functionality. In Figure 5.20 you can see the setting for the described example: the CSD mode is selected, the “automatically connect” function is enabled, at the same time the baud-rate for external radio connection is set to 19,200.

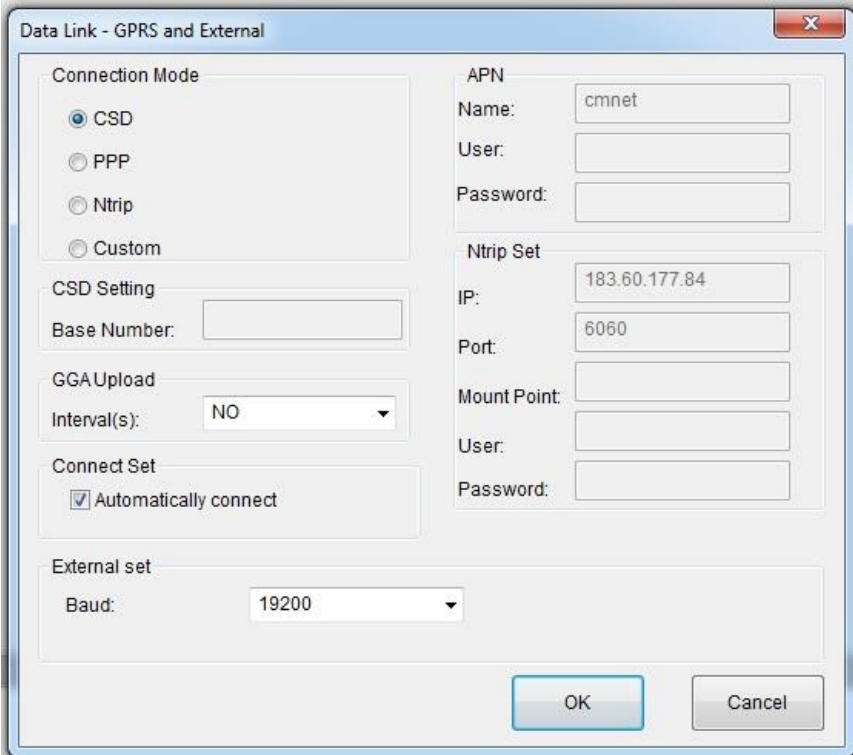


Fig. 5.20 – Network and External option

V.2.4 NMEA Output string

NMEA output messages setting is available in the Setting session, as you can see in the following figure 5.21.

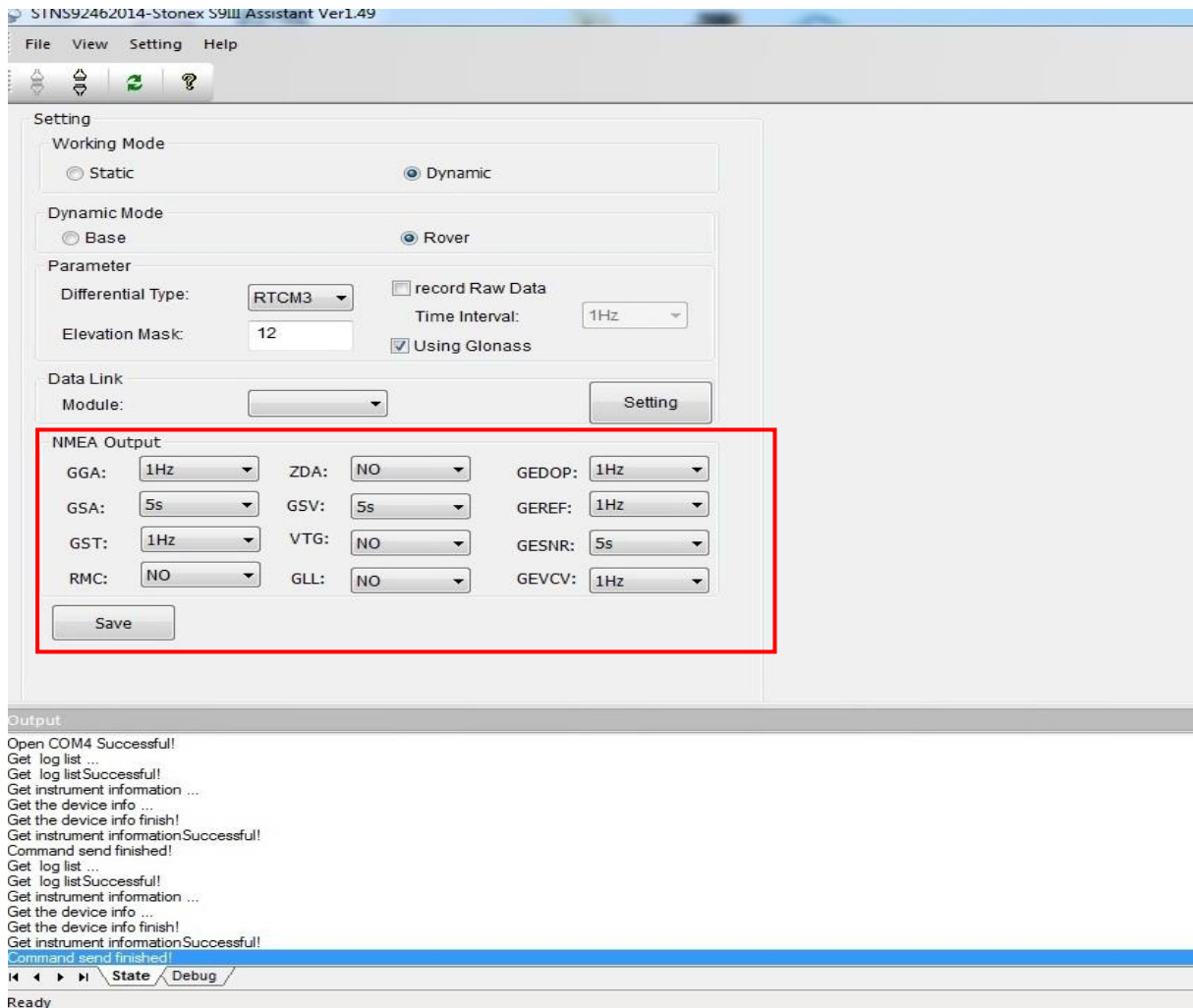


Fig 5.21 - NMEA String

In this area you can configure the default NMEA messages that are output to the datalogger at the startup of the receiver, enabling or disabling the different string. You can select the following NMEA strings: GGA, GSA, GST, RMC, ZDA, GSV, VTG, GLL, you can refer to the NMEA user guide for the content of these parameters. You can also specifying the output frequency,

the maximum allowed frequency depends on the GNSS board option. Beside of these, there are other 4 available output string specific for S8 PLUS receiver, they are:

GEDOP includes the values of PDOP, HDOP, VDOP and TDOP, default frequency 1 Hz.

GEREF includes the coordinates and index of the used reference station, default frequency 1 Hz.

GESNR included the signal to noise ratio for the collected satellites, default frequency 5 sec.

GEVCV includes the covariance matrix values, default frequency 1 Hz.

If you modify these parameters, you have to restart receiver for applying the new parameters.

V.3 Import Data

This section of the Assistant allows the user to download raw data from S8 PLUS memory to Pc, instead of doing manual copy of files. After connecting the receiver click on “Import Data”: a new window is opened as in Fig. 5.22.

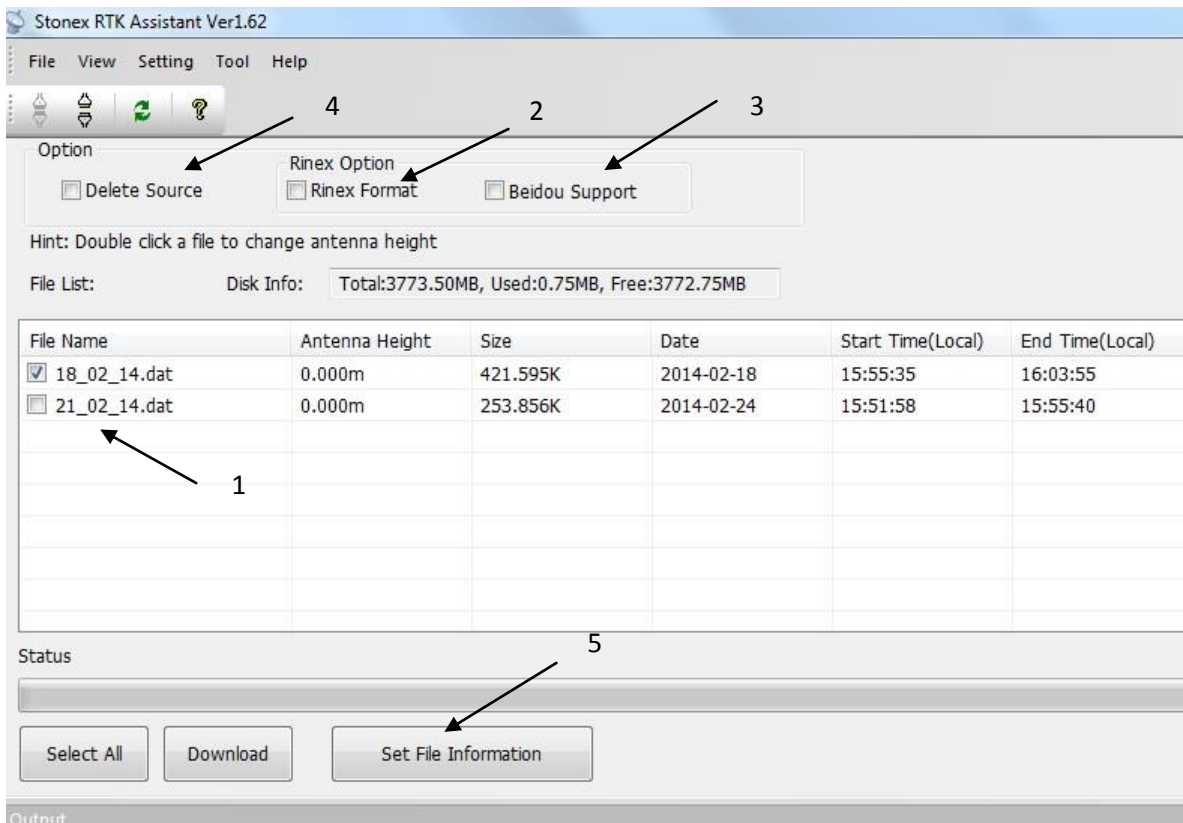
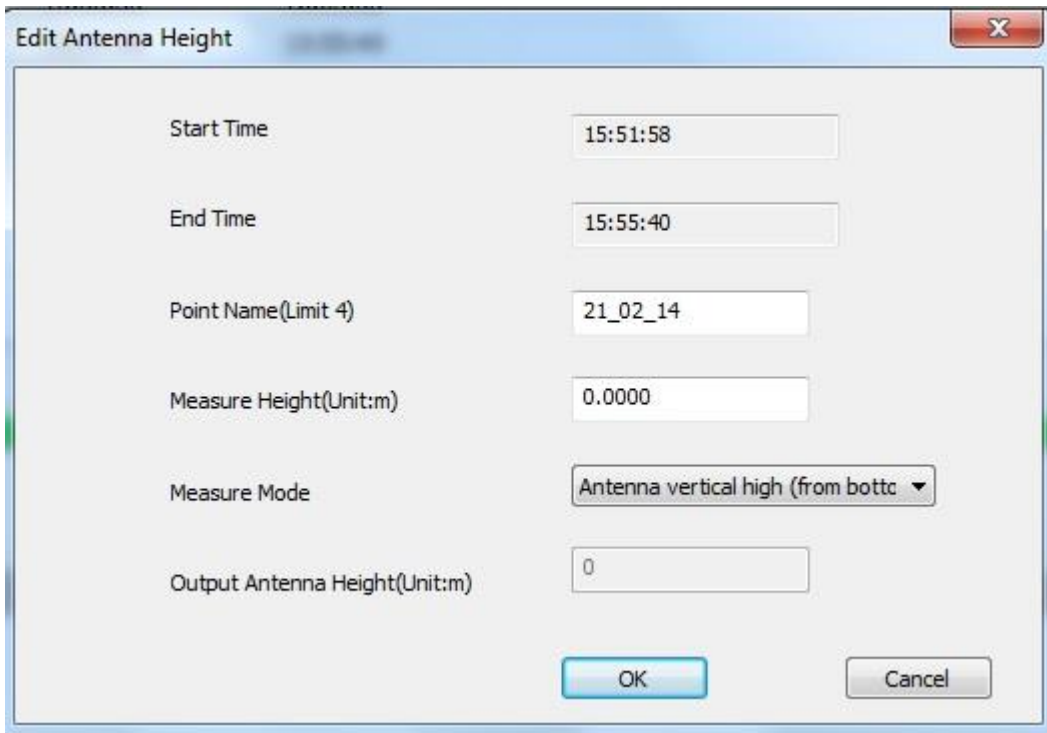


Fig. 5.22 – Import Data window

Inside this window you can see all files stored in the memory of S8 PLUS (excluding the configuration file), which are files with raw GNSS observations.

By checking the box at the left of each file (see black arrow with number 1), you can select it for download operations. You can also choose to convert the downloaded file into RINEX format by checking at box “Rinex Format” on the top of the page (see black arrow with number 2), if receiver has enabled also the Beidou/Compass satellites you can also specify to include them into RINEX activating box “Beidou Support” (see black arrow with number 3). Checking at “Delete Source” you can enable the automatic erase of the selected files after download on the PC memory (see black arrow with number 4). If you double click on one row or choose “Set File Information” (see black arrow with number 5), you can also modify the value of the antenna height of the receiver used during survey, finally click on the “Download” button (see black arrow with number 6) and you can save the marked files on your PC, in the folder you prefer. As regards the antenna height editing, you can see the submenu in Figure 5.23:



Start Time	15:51:58
End Time	15:55:40
Point Name(Limit 4)	21_02_14
Measure Height(Unit:m)	0.0000
Measure Mode	Antenna vertical high (from bottc)
Output Antenna Height(Unit:m)	0

Fig. 5.23 – Edit Antenna Height window.

In the “Edit Antenna Height” menu you can modify the point name (only 4 character will be taken into account), insert the correct antenna height in meters and specify how the height was measured (“Measure Mode” box), there are three different option:

- a) Antenna phase center: from ground to the phase center (not possible from the practical point of view)
- b) Antenna slant height mode: from ground to the white line in the middle of blue rubber.
- c) Antenna vertical height: from the ground to the bottom of receiver.

In “Output Antenna Height” box you will see the resulting antenna height from ground to the phase center.

V.4 Serial Port Forwarding

This function is for advanced users and technical support only.

Port forwarding allows the configuration of the GNSS OEM module, UHF module and GPRS module directly. For using this functionality you need to order a cable DB9 serial port connection from 5-pin Lemo (see below Fig. 5.24).



Fig. 5.24 – Cable for serial port forwarding

Please note that unintended commands might affect the operation of the receiver.

Connect both USB cable to 7-pin LEMO and serial cable to 5-pin LEMO, then connect receiver to Assistant, click on “Serial Port Forwarding”: a new window is opened as in Fig. 5.25.

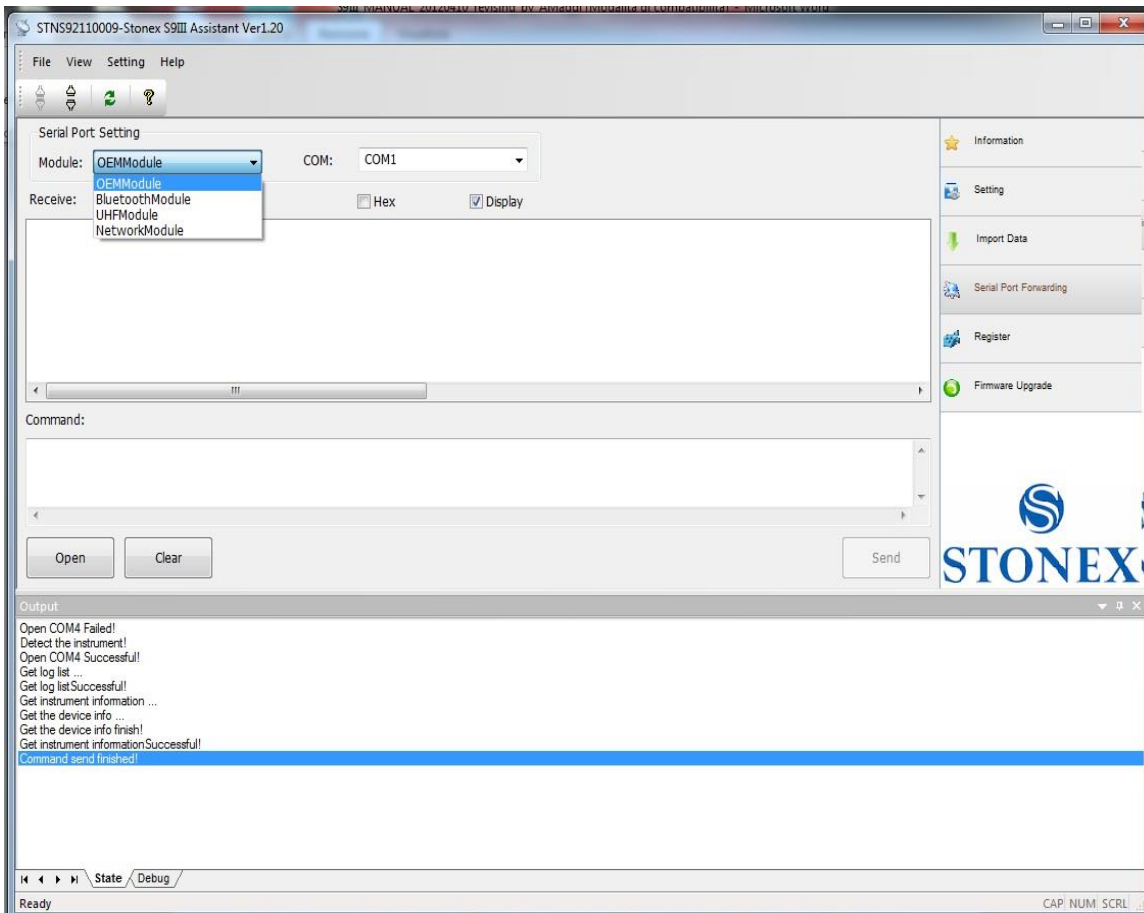


Fig. 5.25 – Serial Port Forwarding window

Select in box “Module” the device you want to connect (OEM Module, Bluetooth Module, UHF Module, Network Module) and in the box “COM” the correct serial port number, then press “Open”, the software inform you to restart the receiver as you can see in Fig. 5.26.

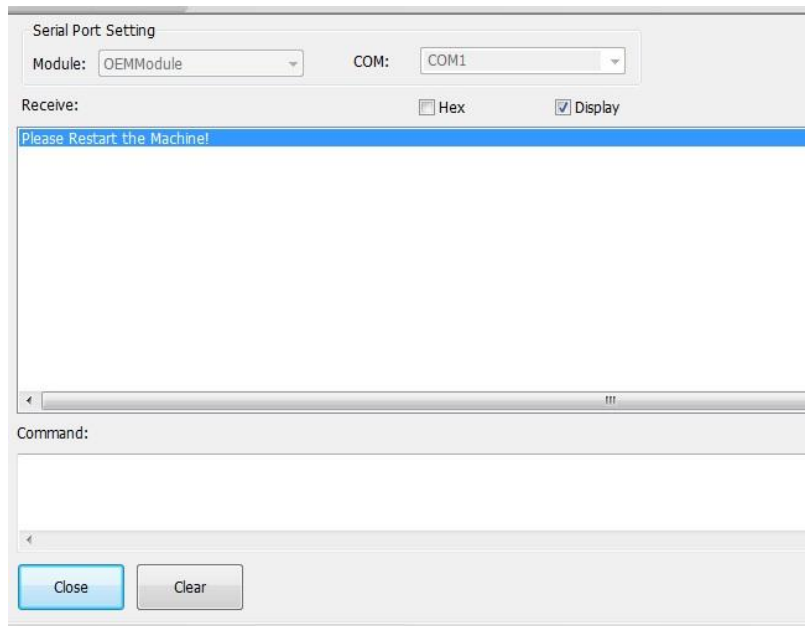


Fig. 5.26 – Serial Port Forwarding window, second step

Then you can switch off the receiver and disconnect USB cable, but keep connected the serial cable. Once receiver is off you will come back to the main page of Assistant, click again on “Serial Port forwarding”, then switch on the receiver, you will see some message on screen as showed in Fig. 5.27:

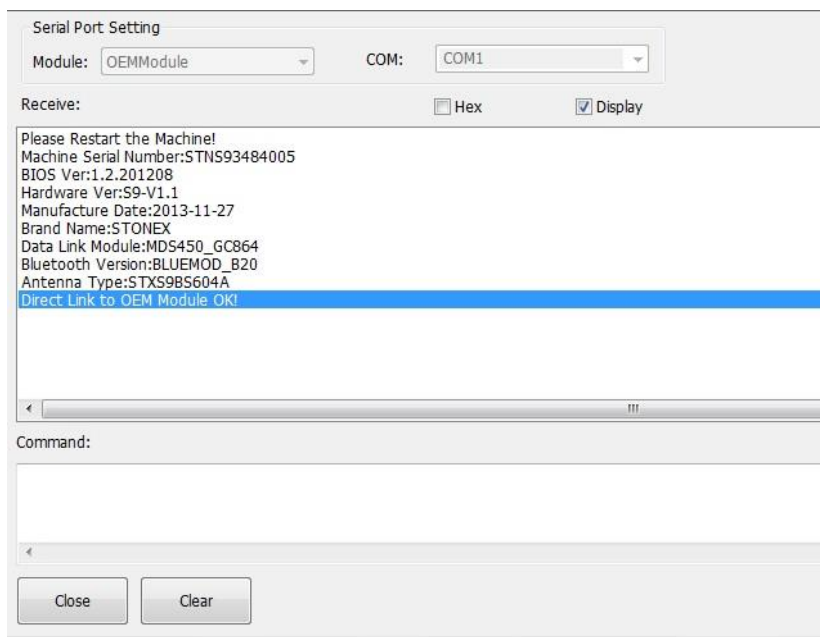


Fig. 5.27 – Serial Port Forwarding window, third step

If you read “Direct Link to OEM Module Ok” (or another device), then you will be able to communicate with the module directly, send commands or click “Close” and start any other software you need for communicating with the board/device.

V.5 Register

This command allows you to register the temporary or permanent license code. Click on “Register” and a window as in Fig. 5.28 is opened.

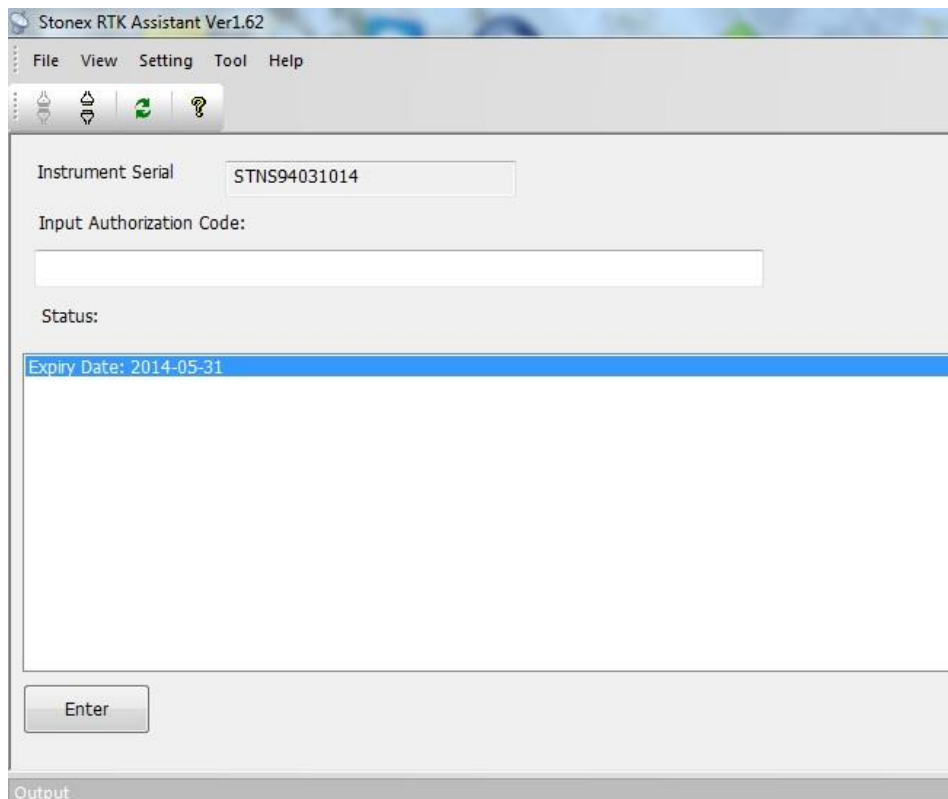


Fig. 5.28 – Register the receiver

- 1) In the “Status” window, you can see the data of expiry of the license, **if the expire date**

contains the year 2050, it means that the license is already permanent.

- 2) In the “input authorization code” window you can insert the new temporary or permanent code provided by Stonex. Click on “Enter” to confirm. A confirmation box is opened, push “Confirm” to allow the new code installation.

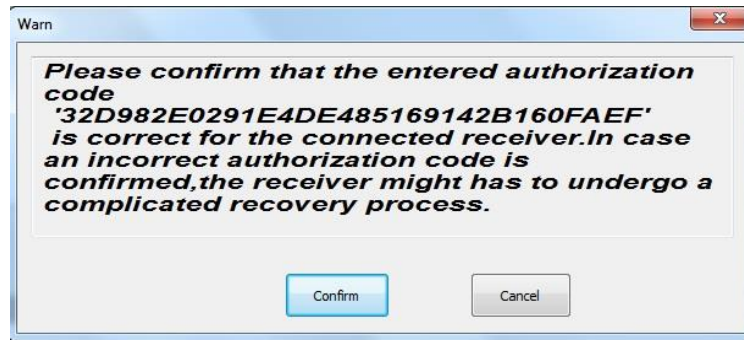


Fig. 5.29 – Confirmation window

Then software will inform you the new expiry date.

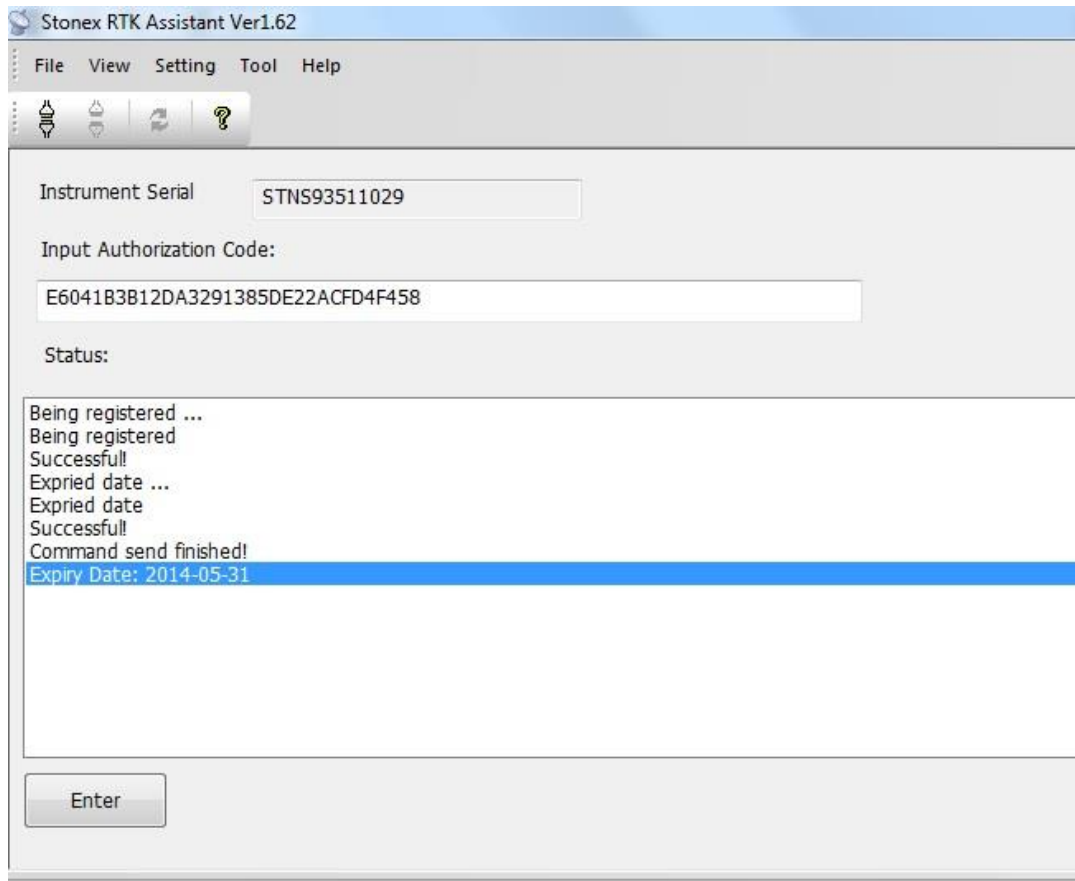


Fig. 5.30 – Registration successful

If you noticed that code is going to expire or it is expired, please ask to your local dealer/agent.

V.6 Firmware update

Click on “Firmware Upgrade” button and a new window as in Fig. 5.31 is opened. Then click on “Upgrade” button showed by red rectangle to select the location of the folder where the update firmware is located. Then select the firmware file and automatically the software will recognize the correct receiver and select proper file (see Fig. 5.32), so it is not possible to install a wrong firmware. Finally restart the receiver, as explained by a message (see Fig. 5.33). Once restarted you can check on the main screen of Assistant that the new firmware is installed.

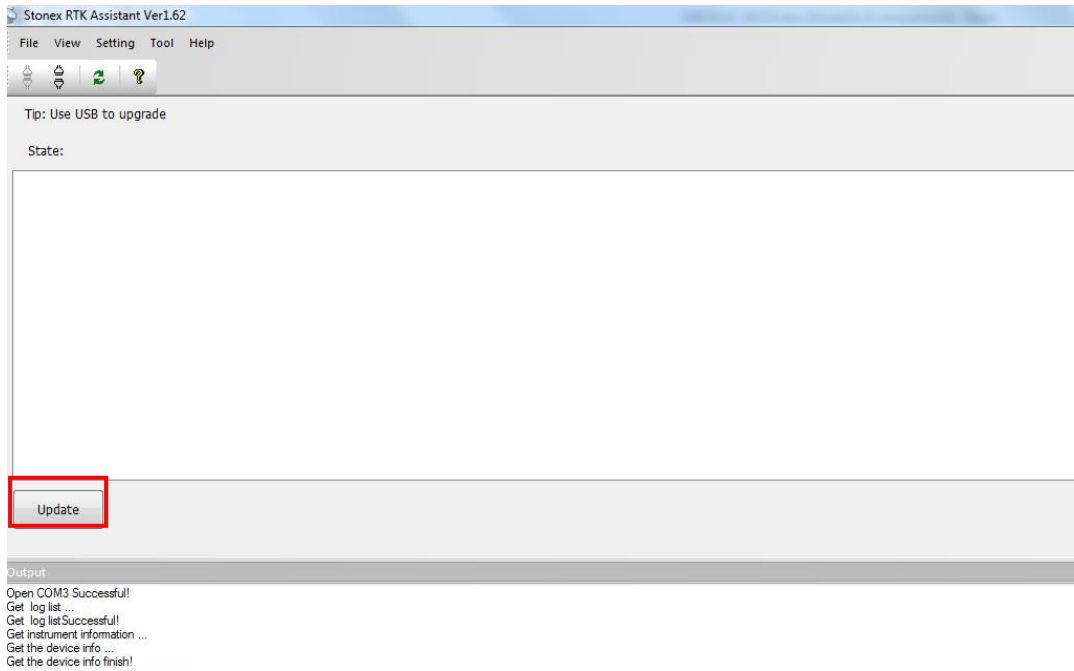


Fig. 5.31 – Firmware update window

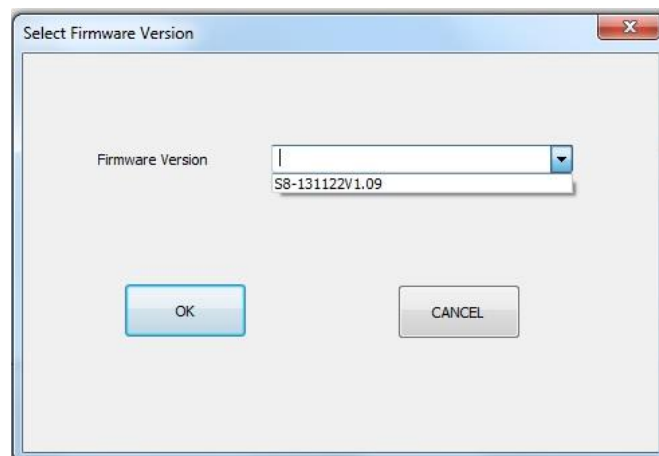


Fig. 5.32 – Select Firmware Version window

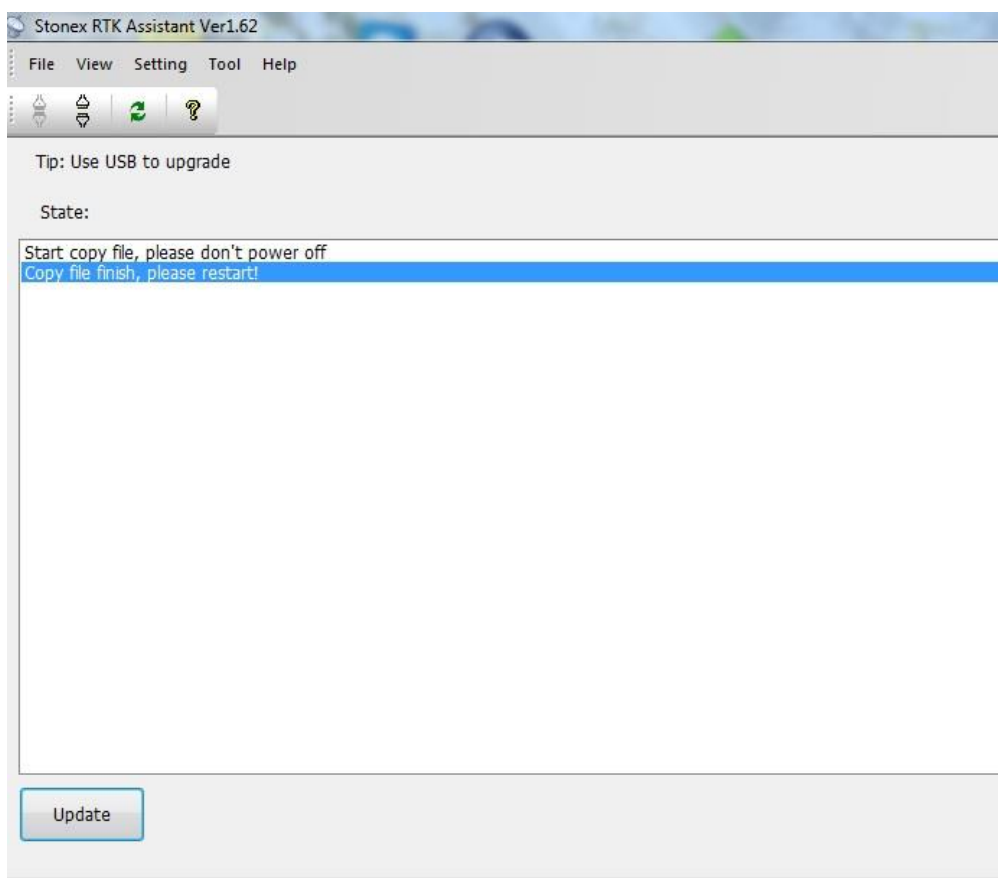


Fig. 5.33 – Firmware update window, last step

If Stonex will release a new firmware, you will receive a communication from your local dealer/agent. In any other case before doing this operation please ask to the technical support of your dealer or of Stonex Support office.

Appendix 1: Default Radio Settings

S8 PLUS uses a single UHF radio to cover the different the whole band 410-470 MHz. Preset values is done directly from Stonex Europe in accord to the following tables:

Channel number	Frequency (MHz)
1	438.125
2	440.125
3	441.125
4	442.125
5	443.125
6	444.125
7	446.125
8	447.125

Tab. A1.1 – Internal radio default frequency

Appendix 2: Technical Specifications

Technical features S8 PLUS GNSS

Receiver	
Channels	120
Satellite tracked	GPS: L1, L2, L2C, L5 GLONASS: L1, L2 GALILEO: E5a, E5b, Alt-BOC BeiDou: B1, B2 SBAS QZSS L-Band
Position rate	Up to 5 Hz (higher frequency optional)
Signal recapture	< 1 sec
RTK signal initialization	< 10 sec
Hot start	< 35 sec
Initialization reliability	> 99.9%
Internal memory	256 Mb
Micro SD Card	4 Gb Internal Memory (Over 60 days of raw static data storage with recording sample every 1 second)
Accuracy specifications	
Static horizontal	5 mm ± 0.5 ppm (RMS)
Static vertical	10 mm ± 0.5 ppm (RMS)
Fixed RTK horizontal	10 mm ± 1 ppm (RMS)
Fixed RTK vertical	20 mm ± 1 ppm (RMS)
Single Point L1 L2 positioning	1.2 m (3D RMS)
SBAS positioning	typically < 5 m (3D RMS)
Code differential positioning	0.25m (3D RMS)
Communication	
Connectors I/O	7-pins Lemo and 5-pins Lemo interfaces. Multicable with USB interface for connecting with PC
Bluetooth device	2.4 Ghz class II: maximum range 50 m
Reference outputs	CMR, CMR+, RTCM 2.1, 2.3, 3.0, 3.1
Navigation outputs	Navigation output support for NMEA-0183 and detailed NovAtel ASCII and binary logs.
Internal radio	
Device	Pacific Crest XDL Micro
Frequency range	403 - 473 MHz
Channel spacing	12.5KHz / 25 KHz
Emitting power	0.5 / 1 / 2 W
Maximum range	3-4 Km (urban environment) 5-6 km with optimal conditions
Radio Protocol	Transparent EOT/EOC/FST, Satel, Trimtalk 450S, Stonex type 1

Wireless module	
Device	ZTE WCDMA
Band	GSM/GPRS/EDGE : 850/900/1800/1900 MHz WCDMA/HSDPA : 2100/1900/850 MHz
Output power	GSM850, EGSM900 : 33dBm(2W) GSM1800, PCS1900 : 30dBm(1W) WCDMA : 23dBm
Power supply	
Battery	2500mAh high capacity Lithium battery, Voltage 7.4V
Voltage	9 to 15V DC external power input with over-voltage protection
Working time in static mode (GPS+GLONASS)	7 hours
Working time in wireless etwork RTK with cable connection (GPS+GLONASS)	6.5 hours
Working time in wireless network RTK with Bluetooth (GPS+GLONASS)	around 4 hours
Charge time	typically 7 hours
Power consumption	< 3.8 W
Remaining time battery light blinking	1 hour
Physical specification	
Weight	1.2 Kg with internal battery, radio standard UHF antenna
Operating temperature	-30°C to 60°C (-22°F to 140°F) (internal radio TX 50°C)
Storage temperature	-40°C to 80°C (-40°F to 176°F)
Waterproof/Dustproof	IP67. Protected from temporary immersion to depth of 1 meter and from 100% humidity
Shock resistance	Designed to survive a 2 m pole drop on concrete
Vibration	Vibration resistance
Winter Grade Option	Operating at -40°C (-40°F)

Appendix 3: Safety Recommendations

Pacific Crest XDL Micro UHF 410-470 MHz Data transceiver

Antenna Installation Warning

1. All antenna installation and servicing is to be performed by qualified technical personnel only. When servicing the antenna, or working at distances closer than those listed below, ensure the transmitter has been disabled.
2. Typically, the antenna connected to the transmitter is a directional (high gain) antenna, fixed-mounted on the side or top of a building, or on a tower. Depending upon the application and the gain of the antenna, the total composite power could exceed 90 watts ERP. The antenna location should be such that only qualified technical personnel can access it, and that under normal operating conditions no other person can touch the antenna or approach within 0.6 meters of the antenna.

You can see below a table showing the Antenna Gain versus Recommended Safety Distance:

	Antenna Gain (TRM 450 Series)		
	0-5 dBi	5-10 dBi	10-16.5 dBi
Minimum RF safety distance	0.6 meters	1.06 meters	2.3 meters

GPRS/GSM modem ZTE WCDMA

Be sure the use of this product is allowed in the country and in the environment required. The use of this product may be dangerous and has to be avoided in the following areas:

- Where it can interfere with other electronic devices in environments such as hospitals, airports, aircrafts, etc
- Where there is risk of explosion such as gasoline stations, oil refineries, etc

It is responsibility of the user to enforce the country regulation and the specific environment

regulation.

Do not disassemble the product; any mark of tampering will compromise the warranty validity.

We recommend following the instructions of the hardware user guides for a correct wiring of the product. The product has to be supplied with a stabilized voltage source and the wiring has to be conforming to the security and fire prevention regulations.

The product has to be handled with care, avoiding any contact with the pins because electrostatic discharges may damage the product itself. Same cautions have to be taken for the SIM, checking carefully the instruction for its use. Do not insert or remove the SIM when the product is in power saving mode.

The system integrator is responsible of the functioning of the final product; therefore, care has to be taken to the external components of the module, as well as of any project or installation issue, because the risk of disturbing the GSM network or external devices or having impact on the security. Should there be any doubt, please refer to the technical documentation and the regulations in force.

Every module has to be equipped with a proper antenna with specific characteristics. The antenna has to be installed with care in order to avoid any interference with other electronic devices and has to guarantee a minimum distance from the body (20 cm). In case of this requirement cannot be satisfied, the system integrator has to assess the final product against the SAR regulation.

The European Community provides some Directives for the electronic equipments introduced on the market. All the relevant information's are available on the European Community website:

<http://ec.europa.eu/enterprise/sectors/rtte/documents/>

The text of the Directive 99/05 regarding telecommunication equipments is available, while the applicable Directives (Low Voltage and EMC) are available at:

<http://ec.europa.eu/enterprise/sectors/electrical>

Appendix 4: Copyrights, warranty and environmental recycling

Copyrights and trademarks

© 2014, STONEX® Limited. All rights reserved.

STONEX®, the STONEX® logo, and S8 PLUS GNSS receiver are trademarks of STONEX® Limited. *STONEX® Assistant*, *STONEX® GPS Processor* and *STONEX® SurvCE* are trademarks of STONEX® Limited.

Bluetooth is a trademark owned by Bluetooth SIG, Inc. and licensed to Trimble Navigation Limited. All other trademarks are the property of their respective owners.

Release Notice

This is the March 2014 release of the STONEX® S8 PLUS GNSS new model receiver user guide. The following limited warranties give you specific legal rights. You may have others, which vary from state/jurisdiction to state/jurisdiction.

Standard Limited Warranty

Version 2014

The terms and conditions of this Limited Warranty constitute the complete and exclusive warranty agreement between The Customer or Dealer and STONEX® for the Product and supersedes any prior agreement or representation made in any STONEX® sales document or advice that may be provided to Customer by any STONEX® representative in connection with Customer's purchase of the Product. No change to the conditions of this Limited Warranty is valid unless it is made in written form and signed by an authorized STONEX® supervisor.

STONEX® Europe warrants that its Products:

- (1) are free from defects in materials or workmanship for generally 2 years.
 - a) accessories or specific parts for which different limited warranty period shall apply.
- (2) have been tested/calibrated in proper working status prior to shipment.

The warranty period starts from date of first sale of the instruments. At its sole discretion, under the warranty period, STONEX® Europe will repair the product or send parts for replacement at its expense. STONEX® Europe agrees to repair or replace the defected instrument within thirty (30) days only if STONEX® Europe recognizes that the defects of the instrument are not caused by human factors or no obvious damage to its surface is visible. STONEX® Europe warrants any new replaced parts or products are warranted to be free from defects in materials and workmanship for thirty (30) days or for the remainder of the Limited Warranty Period of the Product in which they are installed, whichever is longer. Faulty Parts or Products replaced under this Limited Warranty shall become property of STONEX® Europe. All products that have to be repaired have to be returned to our technical representative office location via any delivery company the customer prefers, nevertheless STONEX® Europe is not accountable for the unlikely event that the Products gets lost in transit.

Any damage inflicted by the customer or by third party after the products has been delivered to the customer is excluded from the limited warranty as well any damage arising from an improper use, from any action or use not provided for in the enclosed user guides and/or manuals.

Shipping policy.

The Customer or the dealer is required to pay for the charges for shipping of fault parts or instruments to STONEX® Europe representative office and STONEX® Europe is providing the shipping for return. Dealers need to follow STONEX® Europe repair/service procedure to achieve a better and prompt service result.

Return policy Dead On Arrival instruments.

All returned products have to be shipped to STONEX® Europe representative office. The original Purchaser has a period of seven (7) days starting from date of purchasing to signal the existence of a defect in the instrument for a full refund (less shipping and handling), provided the merchandise is in new, resalable condition and returned in the original, undamaged packaging. Customer has to pay for both the return and the original freight fees, regardless of the original freight paid by the Company. All warranty books, instruction manuals, parts and accessories must be included as well as the original box in which the item was

shipped. We recommend to place the original carton inside another box, to avoid any additional damage to the carton itself. In some cases, returns of special items will require a re-stock fee. Acceptance of returned merchandise is final only after inspection by STONEX®Europe.

Above terms and policies shall apply as for hardware. Dealers need to follow STONEX®Europe repair/service procedure to achieve a better and prompt service result.

Firmware/Software warranty.

Stonex Europe doesn't warrant that operation of Firmware/Software on any instruments will be uninterrupted or error-free, or that functions contained in Firmware/Software will operate to meet your requirements.

Stonex will forward the Software/Firmware Fix to the dealer or customer. Firmware/software Fix means an error correction or other update created to fix a previous firmware version that substantially doesn't conform to the instruments specification.

Over Warranty repair(s) policy.

Customer shall pay the standard repair fees for any service (whether part replacement or repairs) and performed by STONEX®Europe under request and explicit authorization of the customer itself. In this case the customer is charged for return shipment's fees as well.

Disclaimer and Limitation of Remedy.

ALL OTHER EXPRESS AND IMPLIED WARRANTIES FOR THIS PRODUCT, INCLUDING THE IMPLIED WARRANTIES OF MERCHANTABILITY AND FITNESS FOR A PARTICULAR PURPOSE AND/OR NONINFRINGEMENT OF ANY THIRD PARTY'S RIGHTS, ARE HEREBY DISCLAIMED. STONEX® EXPRESSLY DISCLAIMS ALL WARRANTIES NOT STATED IN THIS LIMITED WARRANTY. ANY IMPLIED WARRANTIES THAT MAY BE IMPOSED BY LAW ARE LIMITED IN DURATION TO THE TERM OF THIS LIMITED WARRANTY. SOME JURISDICTIONS DO NOT ALLOW THE EXCLUSION OF IMPLIED WARRANTIES OR LIMITATIONS ON HOW LONG AN IMPLIED WARRANTY LASTS, SO THE ABOVE EXCLUSIONS OR LIMITATIONS MAY NOT APPLY TO CUSTOMER. CUSTOMER MUST READ AND FOLLOW ALL SET-UP AND USAGE INSTRUCTIONS IN THE APPLICABLE USER GUIDES AND/OR MANUALS ENCLOSED. IF

CUSTOMER FAILS TO DO SO, THIS PRODUCT MAY NOT FUNCTION PROPERLY AND MAY BE DAMAGED. CUSTOMER MAY LOSE DATA OR SUSTAIN PERSONAL INJURIES. STONEX®, ITS AFFILIATES AND SUPPLIERS DO NOT WARRANT THAT OPERATION OF THIS PRODUCT WILL BE UNINTERRUPTED OR ERROR FREE; AS DO ALL ELECTRONICS AT TIMES. IF THIS PRODUCT FAILS TO WORK AS WARRANTED ABOVE, CUSTOMER'S SOLE AND EXCLUSIVE REMEDY SHALL BE REPAIR OR REPLACEMENT. IN NO EVENT WILL STONEX®, ITS AFFILIATES OR SUPPLIERS BE LIABLE TO CUSTOMER OR ANY THIRD PARTY FOR ANY DAMAGE IN EXCESS OF THE PURCHASE PRICE OF THE PRODUCT. THIS LIMITATION APPLIES TO DAMAGES OF ANY KIND WHATSOEVER INCLUDING (1) DAMAGE TO, OR LOSS OR CORRUPTION OF, CUSTOMER'S RECORDS, PROGRAMS, DATA OR REMOVABLE STORAGE MEDIA, OR (2) ANY DIRECT OR INDIRECT DAMAGES, LOST PROFITS, LOST SAVINGS OR OTHER SPECIAL, INCIDENTAL, EXEMPLARY OR CONSEQUENTIAL DAMAGES, WHETHER FOR BREACH OF WARRANTY, CONTRACT, TORT OR OTHERWISE, OR WHETHER ARISING OUT OF THE USE OF OR INABILITY TO USE THE PRODUCT AND/OR THE ENCLOSED USER GUIDES AND/OR MANUALS, EVEN IF STONEX®, OR AN AUTHORIZED STONEX® REPRESENTATIVE, AUTHORIZED SERVICE PROVIDER OR RESELLER HAS BEEN ADVISED OF THE POSSIBILITY OF SUCH DAMAGES OR OF ANY CLAIM BY ANY OTHER PARTY. SOME JURISDICTIONS DO NOT ALLOW THE EXCLUSION OR LIMITATION OF INCIDENTAL OR CONSEQUENTIAL DAMAGES FOR SOME PRODUCTS, SO THE EXCLUSIONS OR LIMITATIONS MAY NOT APPLY TO CUSTOMER. THIS LIMITED WARRANTY GIVES CUSTOMER SPECIFIC LEGAL RIGHTS, AND CUSTOMER MAY ALSO HAVE OTHER RIGHTS WHICH VARY FROM COUNTRY/STATE/JURISDICTION TO COUNTRY/STATE/

Instruments

Two (2) years on STONEX® Products:

GPS receiver: S8 PLUS GNSS Series

Accessories.

Accessories & Specific Parts Warranty:

For Accessories provided by Stonex with the instruments S8 PLUS GNSS the following general warranty time is for reference:

Batteries:	7 months.
Battery chargers:	7 months.
Adapters for battery chargers, Cables, Tribrach, Pole, Antennas:	2 years.

Restriction for GPS Boards.

For GPS receiving boards (Trimble, Novatel) used on S8 PLUS and S8 PLUS family of GPS receivers, Stonex Europe provides warranty time for one (1) year.

Service Procedure

Repair/Service procedure for dealers.

- (1) S/N of the instrument and a detailed description of the defect (sometimes pictures or video) will be required to indicate the cause and problem.
- (2) If dealer wants to repair an instrument under warranty period on their site:
 - 1) If dealers don't have the part in stock they have to send an official order to STONEX® Europe and pay for it and so STONEX® Europe will send the new part to them so they can repair the instrument.
 - 2) When the repair is over, the dealer has to fill the "Spare Part Refund" module and send it to the dedicated mail address.
 - 3) wait for STONEX® Europe's authorization SPR no;
 - 4) when dealer receive the SPR authorization no they can send back to STONEX® Europe appointed office the broken part with attached the SPR module;
 - 5) when STONEX® Europe receives the broken part STONEX® Europe shall verify it and if everything is ok the cost of the part shall be refund (refund will be done only after check of the failure part and final approval of STONEX® Europe).
- (3) If the instrument needs to be sent back to STONEX® Europe for repair/replacement, dealer/customer has to send to STONEX® Europe a "Returned Merchandise Authorization (RMA)" before they send back the fault instrument. STONEX® Europe shall, at its sole discretion, decide on the place of performance for work under warranty.

Environmental recycling

The cardboard box, the plastic in the package and the various parts of this product have to be recycled and disposed of in accordance with the current legislation of your Country.

FOR COUNTRIES IN THE EUROPEAN UNION (EU)

The disposal of electric and electronic device as solid urban waste is strictly prohibited: they must be collected separately.

Contact Local Authorities to obtain practical information about correct handling of the waste, location and times of waste collection centre. When you buy a new device of ours, you can give back to our dealer a used similar device.

The dumping of these devices at unequipped or unauthorized places may have hazardous effects on health and environment.

The crossed dustbin symbol means that the device must be taken to authorize collection centers and must be handled separately from solid urban waste.



FOR COUNTRIES OUTSIDE EUROPEAN UNION (EU)

The treatment, recycling, collection and disposal of electric and electronic devices may vary in accordance with the laws in force in the Country in question.



STONEX® EUROPE Srl

Via Cimabue 39 - 20895

Lissone (MB) - Italy

Phone +390392783008

Fax +390392789576

www.stonexpositioning.com